



KELPIE RACING



FULL KIT RANGE DESIGN:

FOR THE ENTIRE KIT RANGE WE WILL KEEP THE DESIGN COHERENT ACROSS ALL ITEMS. THE DESIGN MAY VARY ON SOME ITEMS DUE TO THE DIFFERENCE IN CONSTRUCTION ACROSS THE GARMENTS.

LONG SLEEVE ITEMS LIKE THE BLIZZARD JERSEY WILL REPLICATE THE DESIGN SEEN ON THE SPEED SUIT.

ALL OTHER SHORT SLEEVE JERSEYS AND THE GILET WILL REPLICATE THE DESIGN SEEN ON THE PRO1 JERSEY.

ONCE THIS DESIGN BOARD HAS BEEN SIGNED OFF BY THE CUSTOMER, THE ENTIRE RANGE WILL BE UPLOADED TO THE CLUB SHOP.

LOGOS PROVIDED

YES NO

COLOUR SWITCH AVAILABLE

REQUESTED DECLINED

FONT/TYPE PROVIDED

YES NO

COLOUR MATCHING SERVICE AVAILABLE

REQUESTED DECLINED

PANTONE COLOURS PROVIDED

YES NO

(WE RECOMMEND THIS IF YOU HAVE A DESIGN ALREADY WITH US THAT WAS CREATED BEFORE 2018)

DESIGNER:



FLOW SUIT



PRO1 SPEEDSUIT



PRO1 ROAD RACE SUIT

DEEPBLACK

PANTONE 185 C

PANTONE 7687 C

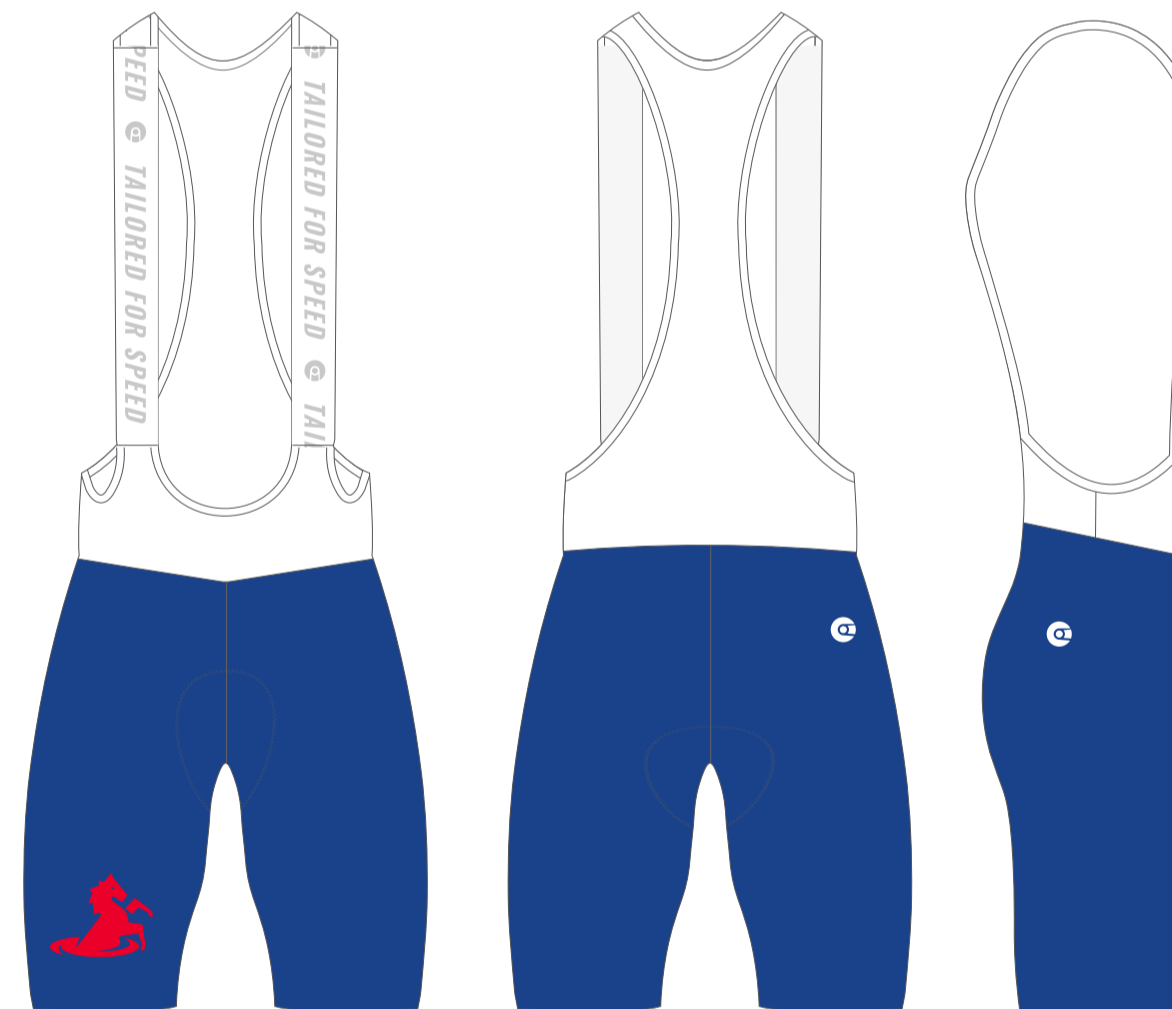


PRO1 JERSEY

DIFFERENCE IN COLOUR MAY OCCUR ON GILET DUE TO MATERIAL COMPOSITION



GILET



PRO1 SHORTS



PRO1 SOCKS



FLOW COVERS (UCI)

SEWING

STITCH COLOUR:
UPPER - BLACK
LOWER - BLACK

TOP STITCH COLOUR:
ARM - 156
BODY - 232
POCKET - 232
GRIPPER - 232
CHAMOIS - 232
SOCKS/COVERS - 232
PRO1/ENDURANCE GILET - 156

ZIP COLOUR:
BLACK

ZIP GUARD COLOUR:
BLACK

BINDING COLOUR:
WHITE

POCKET BINDING COLOUR:
REFLECTIVE SILVER

SOLID INNERS FOR SHORTS:
NAVY

ARTWORK AND LOGOS:

ARTWORK PLACEMENT IS AN APPROXIMATION IN POSITIONING AND SCALE. SPECIFIC DIMENSIONS AND PLACEMENT CANNOT BE GUARANTEED. NOPINZ MAKE EVERY ATTEMPT TO MATCH THE LOGOS AS CLOSELY AS POSSIBLE TO THE FINALISED DESIGNS.

NOPINZ CANNOT GUARANTEE THAT ARTWORK WILL MATCH EXACTLY ACROSS SEAMS OR ZIPS. (OUR DESIGNERS WILL ADVISE ON BEST LOGO/PATTERN POSITIONING OR ANY POTENTIAL PROBLEM AREAS).

THE CUSTOMER CONFIRMS THEY HAVE PERMISSION/COPYRIGHT TO USE ALL THE FILES CONTAINED WITHIN THE FINALISED DESIGN.

ADDITIONAL CHARGES MAY APPLY IF ARTWORK IS NOT PROVIDED IN A VECTOR FORMAT AND LOGOS NEED CONVERTING. IN THIS INSTANCE OUR DESIGN TEAM WILL PROVIDE YOU WITH AN ESTIMATE.

COLOUR:

SCREENS COLOURS DO NOT ALWAYS REPRESENT PRINT COLOURS WELL.

IF PANTONE COLOUR REFERENCES ARE NOT PROVIDED, NOPINZ CANNOT GUARANTEE A COLOUR MATCH.

COLOUR SWATCHES AND COLOUR MATCHING IS AVAILABLE ON REQUEST. (WE STRONGLY RECOMMEND USING THIS SERVICE IF YOU HAVE EXISTING KIT AND WISH TO MATCH THE COLOURS).

COLOURS MAY VARY SHADES WHEN PRINTED ON DIFFERENT MATERIALS. ESPECIALLY WINDSTOPPER FABRICS. (THIS IS DUE TO DIFFERENT DENSITY'S AND MATERIAL COMPOSITION AND IS NOT CONSIDERED A FAULT).

COLOURS WILL BECOME LIGHTER WHEN GARMENTS ARE STRETCHED DUE TO PROCESS OF MANUFACTURING. (DYE SUBLIMATION PRINTING, THIS IS NOT CONSIDERED A FAULT).

SOME FABRICS ARE TEXTURED WHICH MAY CHANGE THE APPEARANCE OR COLOUR FROM PRE-DYED FABRICS.

SOME ITEMS HAVE SPECIFIC SECTIONS THAT ARE MADE FROM PRE-DYED MATERIAL WHICH IS ONLY AVAILABLE IN SET COLOURS. FULL CUSTOM PRINTING IS NOT AVAILABLE IN THOSE AREAS THEREFORE A BEST EFFORT WILL BE MADE TO MATCH THE DESIGN TO THE AVAILABLE DYED FABRICS. THIS WILL BE REPRESENTED ON YOUR DESIGN VISUAL.

PAYMENT:

THE DESIGN PROCESS WILL ONLY COMMENCE ON PAYMENT OF THE ASSOCIATED INVOICE.

ANY DESIGNS NOT PAID FOR REMAIN THE PROPERTY AND COPYRIGHT OF NOPINZ LTD. IF YOU DECIDE TO CANCEL THE ORDER AFTER DESIGN WORK HAS BEEN STARTED, WE RESERVE THE RIGHT TO KEEP UP TO 20% OF THE INVOICE VALUE.

CHANGES TO A DESIGN ONCE APPROVED AND SIGNED OFF MAY INCUR A SURCHARGE. (FOR EXAMPLE ADDING/REMOVING LOGOS OR CHANGING COLOURS).

NAME ? _____ EMAIL ? _____ DATE ??/??/202?

BY APPROVING THIS DESIGN, YOU AGREE AND ACKNOWLEDGE YOU HAVE READ THE FULL NOPINZ T&C AVAILABLE ON WWW.NOPINZ.COM AND ACCEPT THE ARTWORK/COLOUR AND PAYMENT INFORMATION AS DETAILED ABOVE.

SIGNATURE