

**FULL KIT RANGE DESIGN:**

FOR THE ENTIRE KIT RANGE WE WILL KEEP THE DESIGN COHERENT ACROSS ALL ITEMS. THE DESIGN MAY VARY ON SOME ITEMS DUE TO THE DIFFERENCE IN CONSTRUCTION ACROSS THE GARMENTS.

LONG SLEEVE ITEMS LIKE THE BLIZZARD JERSEY WILL REPLICATE THE DESIGN SEEN ON THE SPEED SUIT.

ALL OTHER SHORT SLEEVE JERSEYS AND THE GILET WILL REPLICATE THE DESIGN SEEN ON THE PRO1 JERSEY.

ONCE THIS DESIGN BOARD HAS BEEN SIGNED OFF BY THE CUSTOMER, THE ENTIRE RANGE WILL BE UPLOADED TO THE CLUB SHOP.

LOGOS PROVIDED

YES   NO

COLOUR SWATCH AVAILABLE

REQUESTED   DECLINED

FONT/TYPE PROVIDED

YES   NO

COLOUR MATCHING SERVICE AVAILABLE

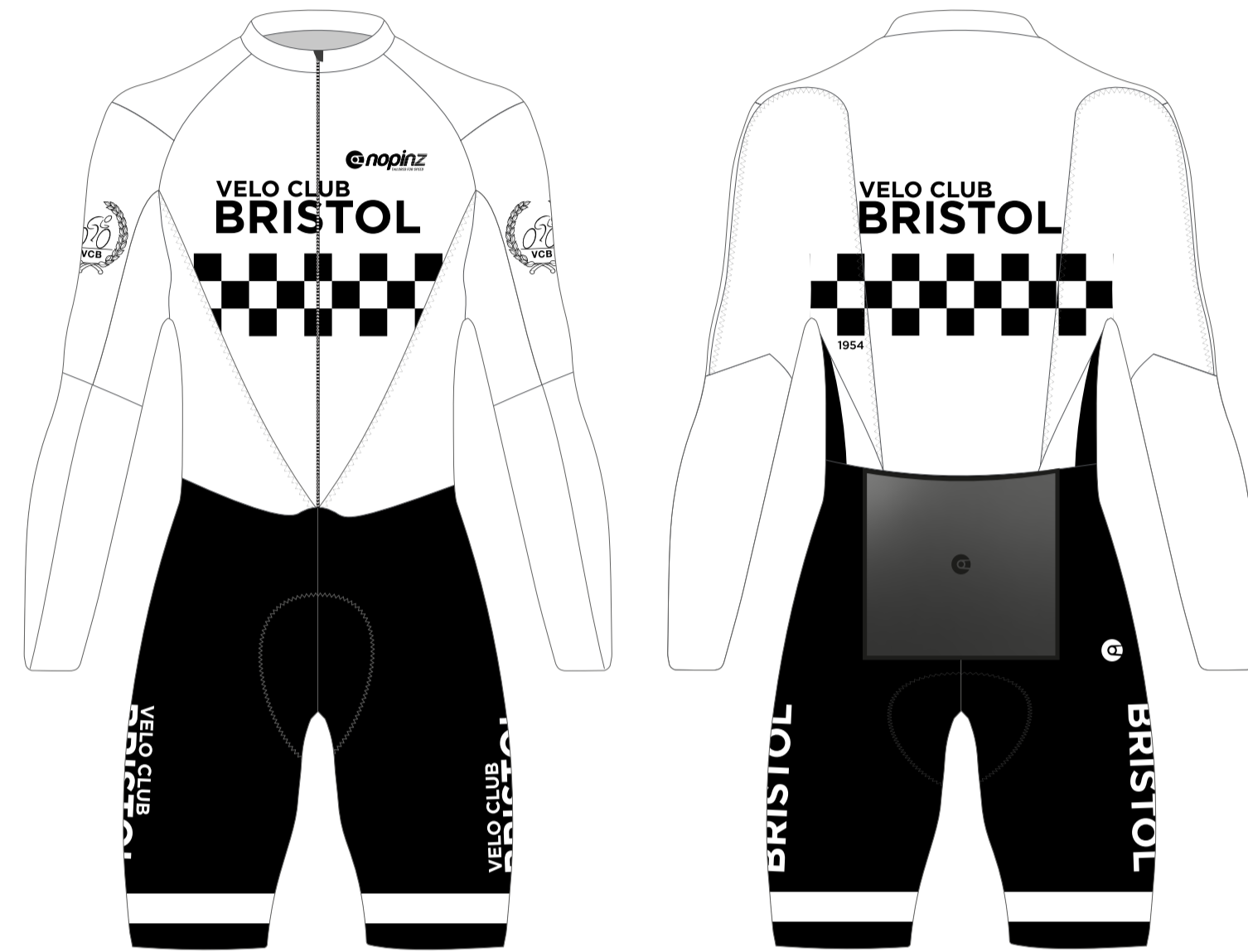
REQUESTED   DECLINED

PANTONE COLOURS PROVIDED

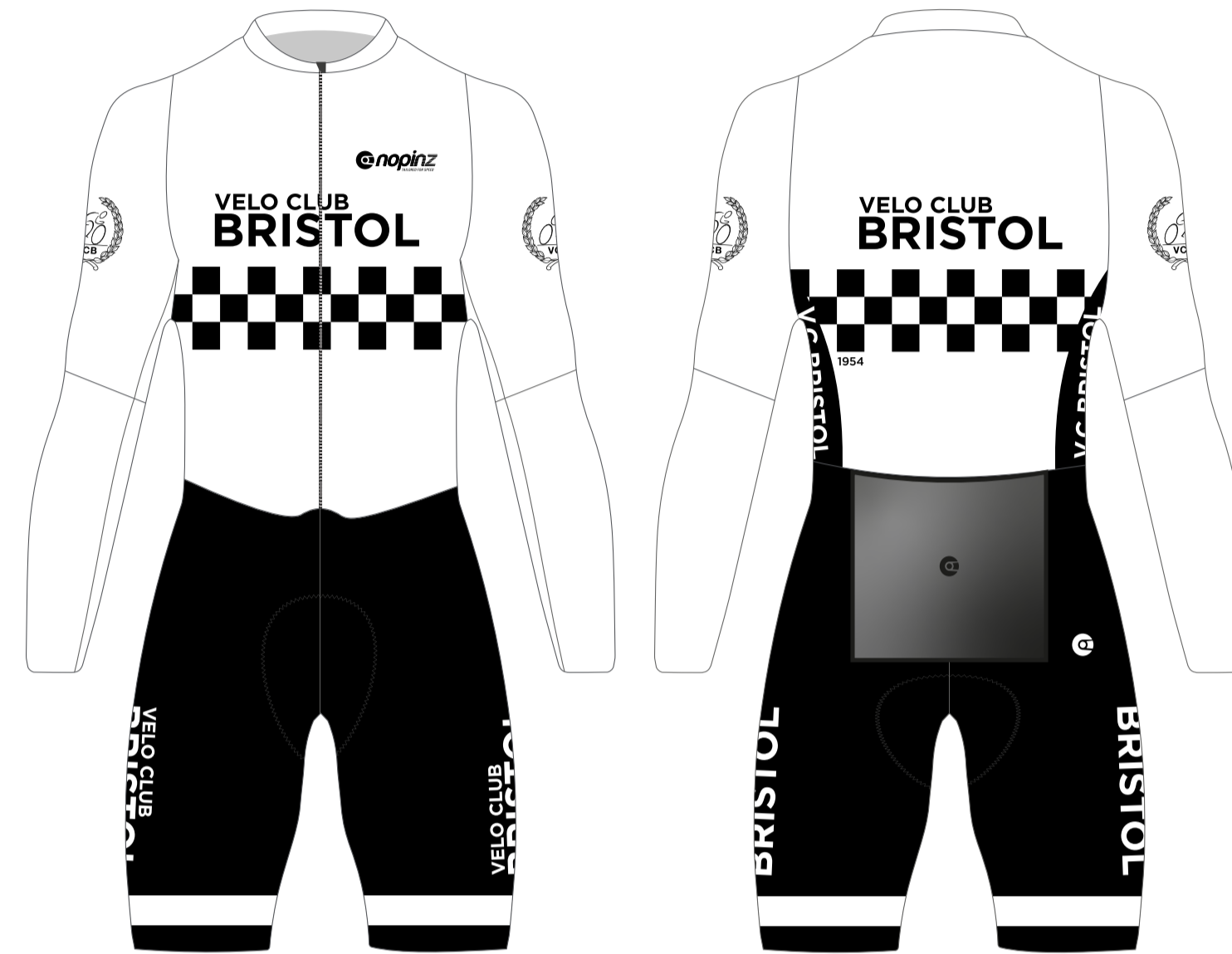
YES   NO

(WE RECOMMEND THIS IF YOU HAVE A DESIGN ALREADY WITH US THAT WAS CREATED BEFORE 2018)

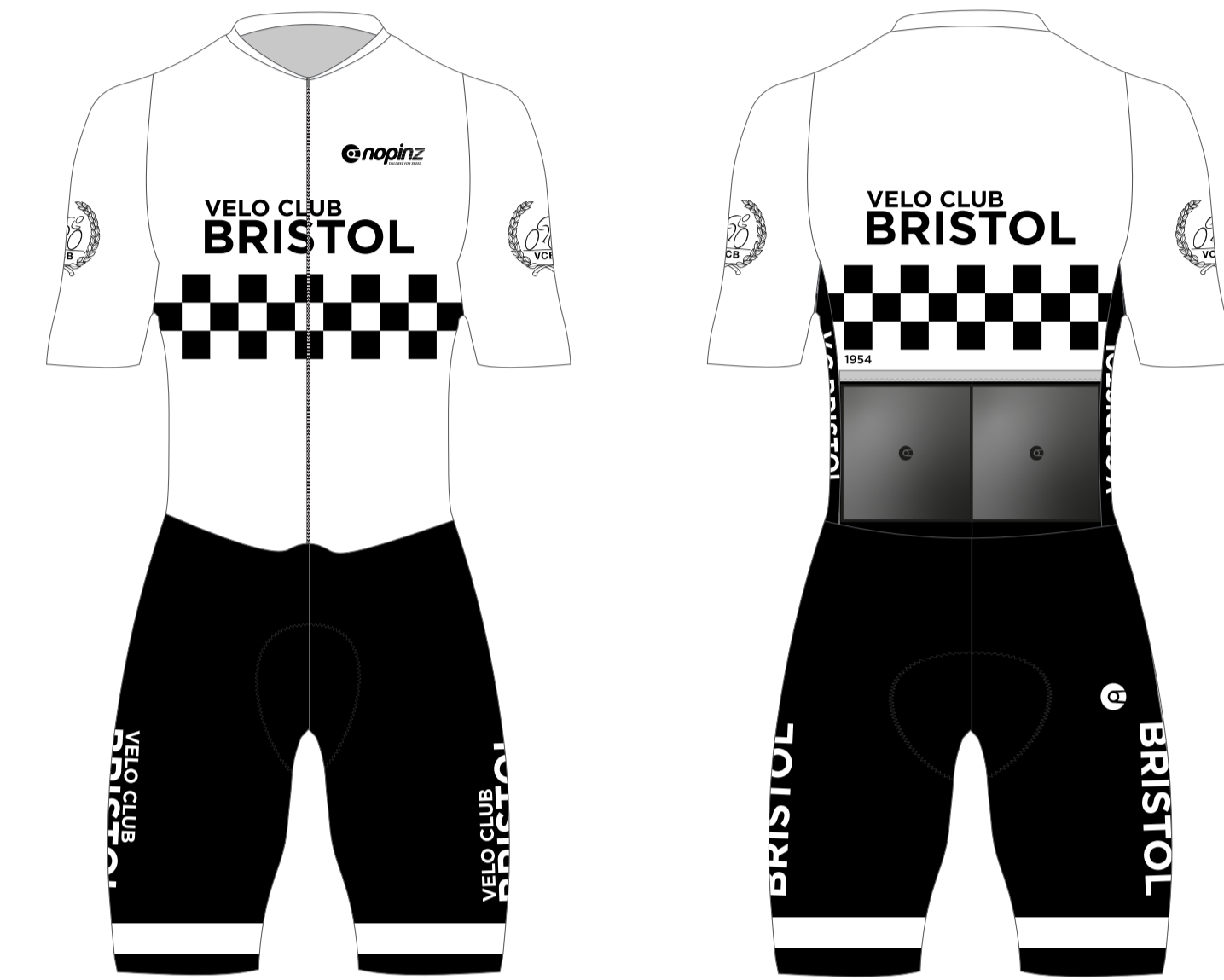
DESIGNER:



FLOW SUIT



PRO1 SPEEDSUIT



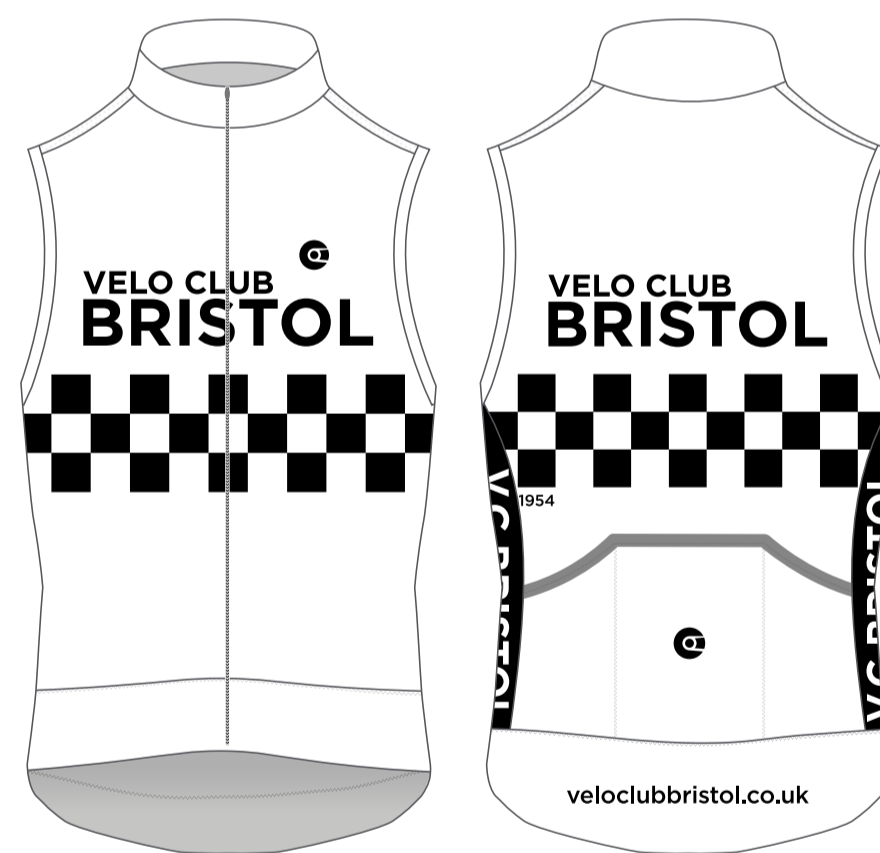
PRO1 ROAD RACE SUIT

DEEPBLACK

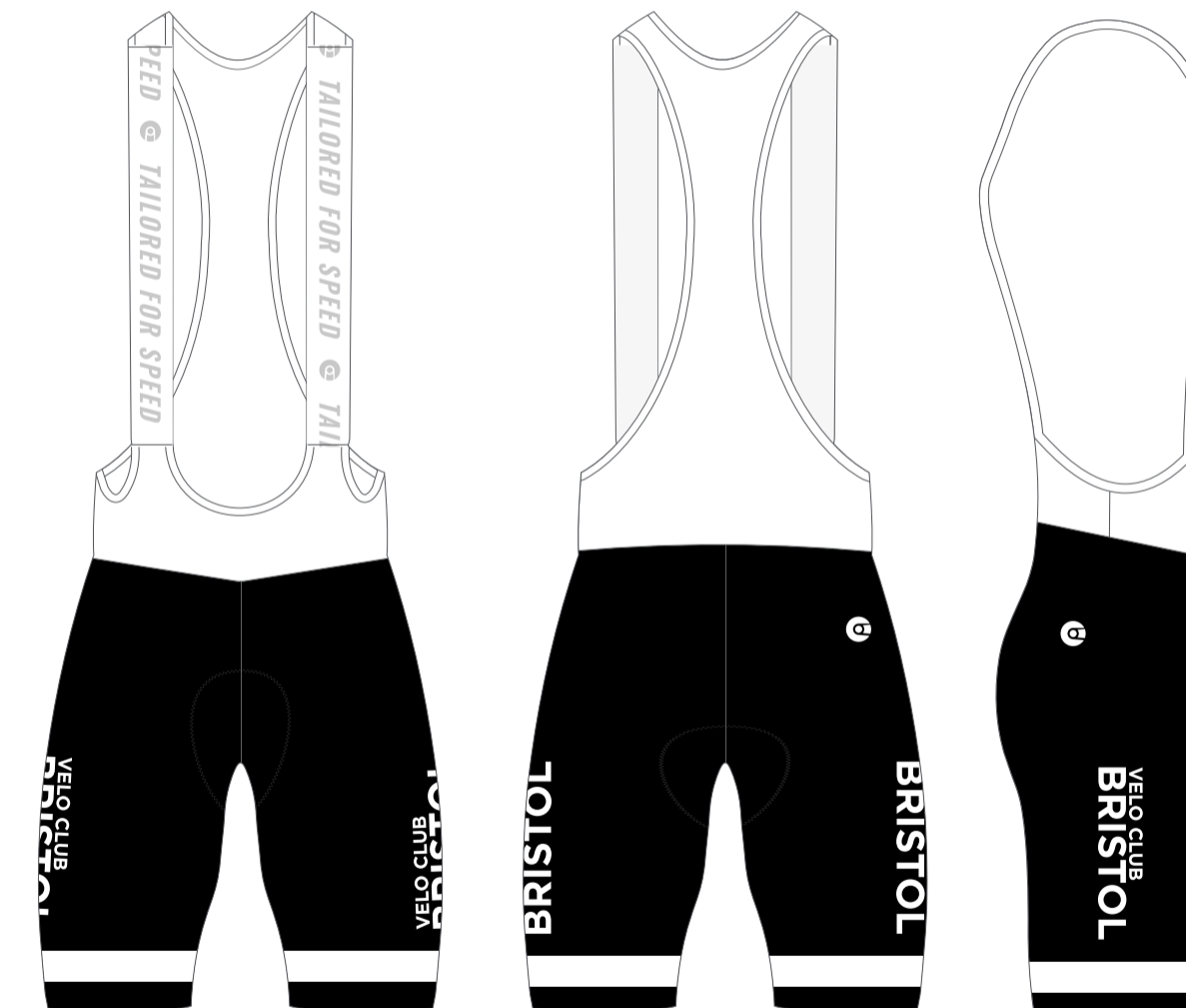


PRO1 JERSEY

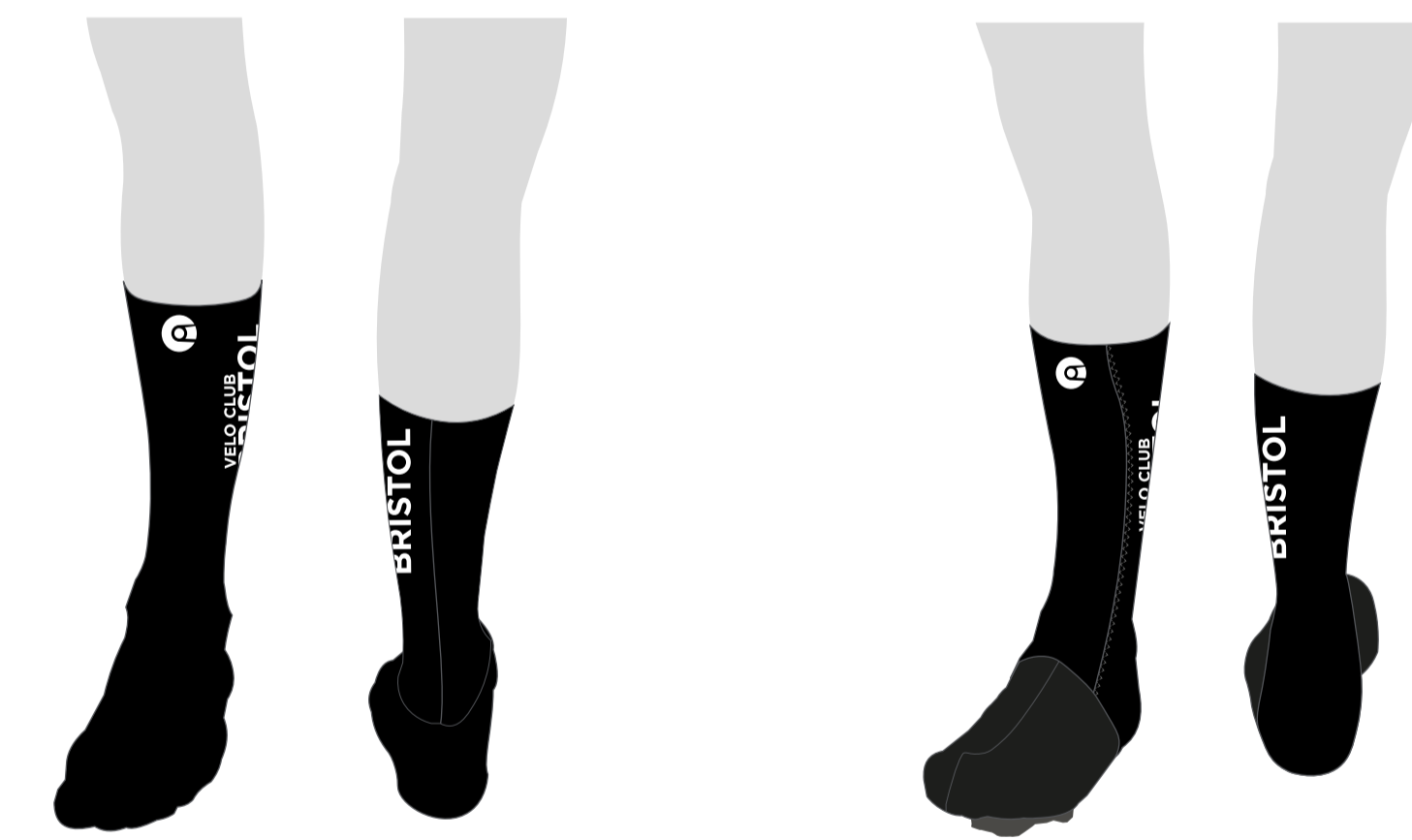
DIFFERENCE IN COLOUR MAY OCCUR ON GILET DUE TO MATERIAL COMPOSITION



GILET



PRO1 SHORTS



PRO1 SOCKS

FLOW COVERS (UCI)

**SEWING**

STITCH COLOUR:  
UPPER - WHITE  
LOWER - BLACK

TOP STITCH COLOUR:  
ARM - 800  
BODY - 800  
POCKET - 800  
GRIPPER - 800  
CHAMOIS - 000  
SOCKS/COVERS - 000  
PRO1/ENDURANCE GILET - 800

ZIP COLOUR:  
WHITE

ZIP GUARD COLOUR:  
WHITE

BINDING COLOUR:  
WHITE

POCKET BINDING COLOUR:  
REFLECTIVE SILVER

SOLID INNERS FOR SHORTS:  
BLACK

**ARTWORK AND LOGOS:**

ARTWORK PLACEMENT IS AN APPROXIMATION IN POSITIONING AND SCALE. SPECIFIC DIMENSIONS AND PLACEMENT CANNOT BE GUARANTEED. NOPINZ MAKE EVERY ATTEMPT TO MATCH THE LOGOS AS CLOSELY AS POSSIBLE TO THE FINALISED DESIGNS.

NOPINZ CANNOT GUARANTEE THAT ARTWORK WILL MATCH EXACTLY ACROSS SEAMS OR ZIPS. (OUR DESIGNERS WILL ADVISE ON BEST LOGO/PATTERN POSITIONING OR ANY POTENTIAL PROBLEM AREAS).

THE CUSTOMER CONFIRMS THEY HAVE PERMISSION/COPYRIGHT TO USE ALL THE FILES CONTAINED WITHIN THE FINALISED DESIGN.

ADDITIONAL CHARGES MAY APPLY IF ARTWORK IS NOT PROVIDED IN A VECTOR FORMAT AND LOGOS NEED CONVERTING. IN THIS INSTANCE OUR DESIGN TEAM WILL PROVIDE YOU WITH AN ESTIMATE.

**COLOUR:**

SCREENS COLOURS DO NOT ALWAYS REPRESENT PRINT COLOURS WELL.

IF PANTONE COLOUR REFERENCES ARE NOT PROVIDED, NOPINZ CANNOT GUARANTEE A COLOUR MATCH.

COLOUR SWATCHES AND COLOUR MATCHING IS AVAILABLE ON REQUEST. (WE STRONGLY RECOMMEND USING THIS SERVICE IF YOU HAVE EXISTING KIT AND WISH TO MATCH THE COLOURS).

COLOURS MAY VARY SHADES WHEN PRINTED ON DIFFERENT MATERIALS. ESPECIALLY WINDSTOPPER FABRICS. (THIS IS DUE TO DIFFERENT DENSITY'S AND MATERIAL COMPOSITION AND IS NOT CONSIDERED A FAULT).

COLOURS WILL BECOME LIGHTER WHEN GARMENTS ARE STRETCHED DUE TO PROCESS OF MANUFACTURING. (DYE SUBLIMATION PRINTING, THIS IS NOT CONSIDERED A FAULT).

SOME FABRICS ARE TEXTURED WHICH MAY CHANGE THE APPEARANCE OR COLOUR FROM PRE-DYED FABRICS.

SOME ITEMS HAVE SPECIFIC SECTIONS THAT ARE MADE FROM PRE-DYED MATERIAL WHICH IS ONLY AVAILABLE IN SET COLOURS. FULL CUSTOM PRINTING IS NOT AVAILABLE IN THOSE AREAS THEREFORE A BEST EFFORT WILL BE MADE TO MATCH THE DESIGN TO THE AVAILABLE DYED FABRICS. THIS WILL BE REPRESENTED ON YOUR DESIGN VISUAL.

**PAYMENT:**

THE DESIGN PROCESS WILL ONLY COMMENCE ON PAYMENT OF THE ASSOCIATED INVOICE.

ANY DESIGNS NOT PAID FOR REMAIN THE PROPERTY AND COPYRIGHT OF NOPINZ LTD. IF YOU DECIDE TO CANCEL THE ORDER AFTER DESIGN WORK HAS BEEN STARTED, WE RESERVE THE RIGHT TO KEEP UP TO 20% OF THE INVOICE VALUE.

CHANGES TO A DESIGN ONCE APPROVED AND SIGNED OFF MAY INCUR A SURCHARGE. (FOR EXAMPLE ADDING/REMOVING LOGOS OR CHANGING COLOURS).

NAME ? \_\_\_\_\_ EMAIL ? \_\_\_\_\_ DATE ?/??/202?

BY APPROVING THIS DESIGN, YOU AGREE AND ACKNOWLEDGE YOU HAVE READ THE FULL NOPINZ T&C AVAILABLE ON WWW.NOPINZ.COM AND ACCEPT THE ARTWORK/COLOUR AND PAYMENT INFORMATION AS DETAILED ABOVE.

SIGNATURE