

N Q P I N Z

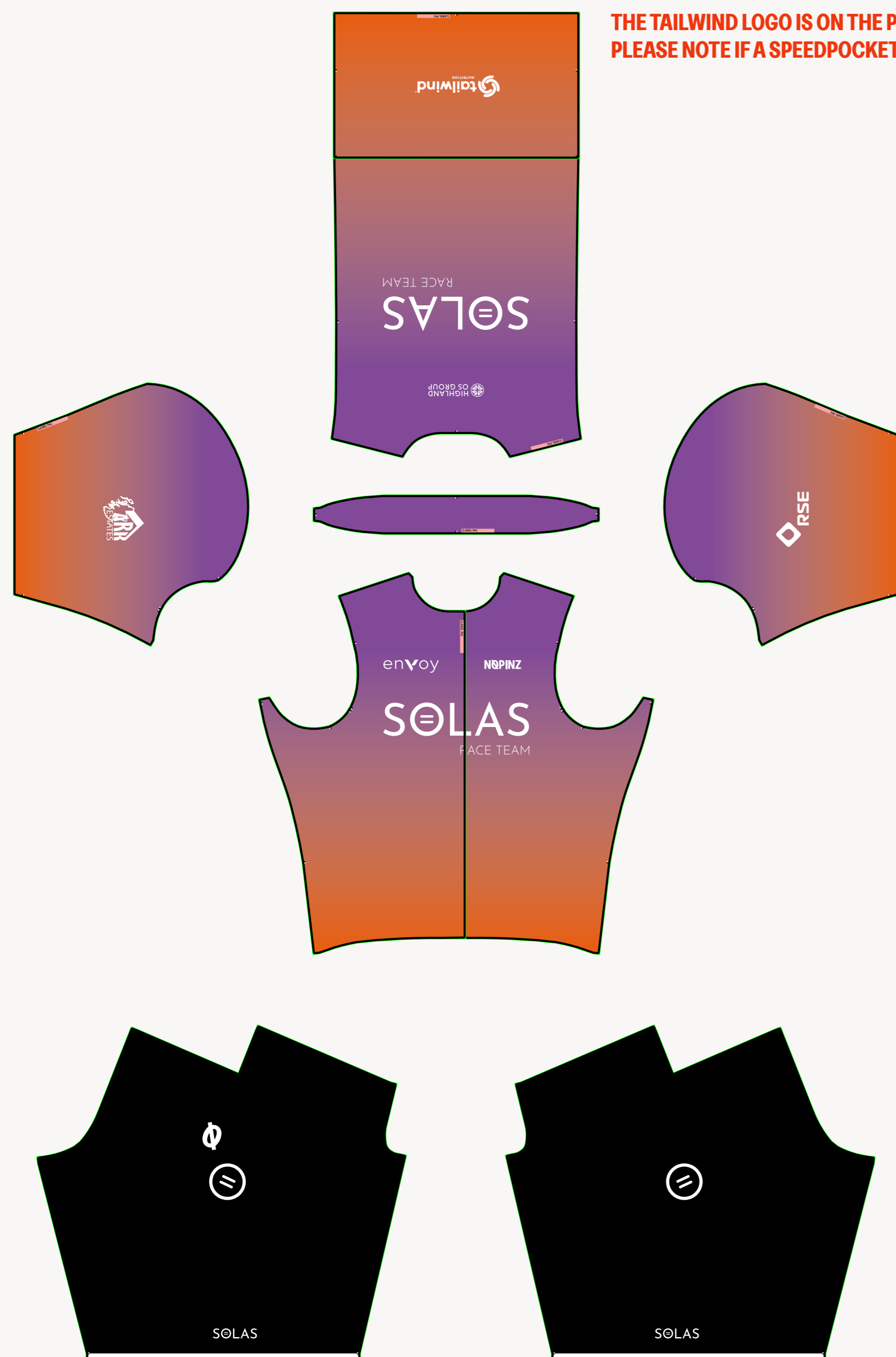
NOPINZ

Designer Name : CRAIG

Artwork Name : SOLAS RACE TEAM

Once this design has been signed off, you agree and acknowledge you have read the full NOPINZ T+C on www.nopin.com and accept the artwork, colours and payment information stated in this document. If changes need to be made after sign-off there will be a surcharge. Please note, production templates, 2D visuals and 3D renders are the intellectual property of Nopin and as such may not be used without the expressed permission of Nopin.

Pro-1 Evo Road Race Suit



2D Production Template



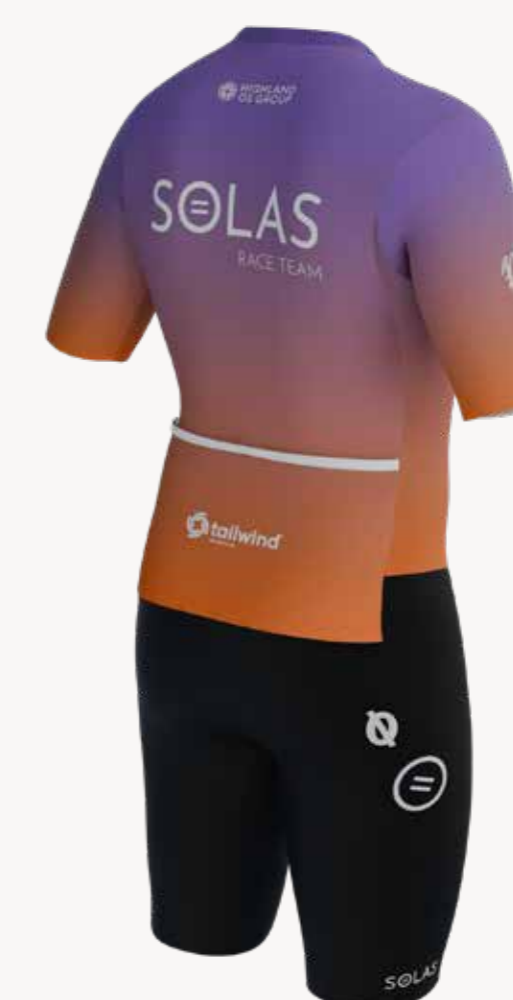
3D Render



3D Render



3D Render



3D Render

Swatches and Test Prints

N97 Garment Sewing Information

Stitch Colour
Upper - WHITE
Lower - BLACK

Top Stitch Colour
Pocket - 800
Chamois - 000

Zip/Zip Guard Colour
BLACK

Pocket Binding Colour
REFLECTIVE SILVER

NØPINZ



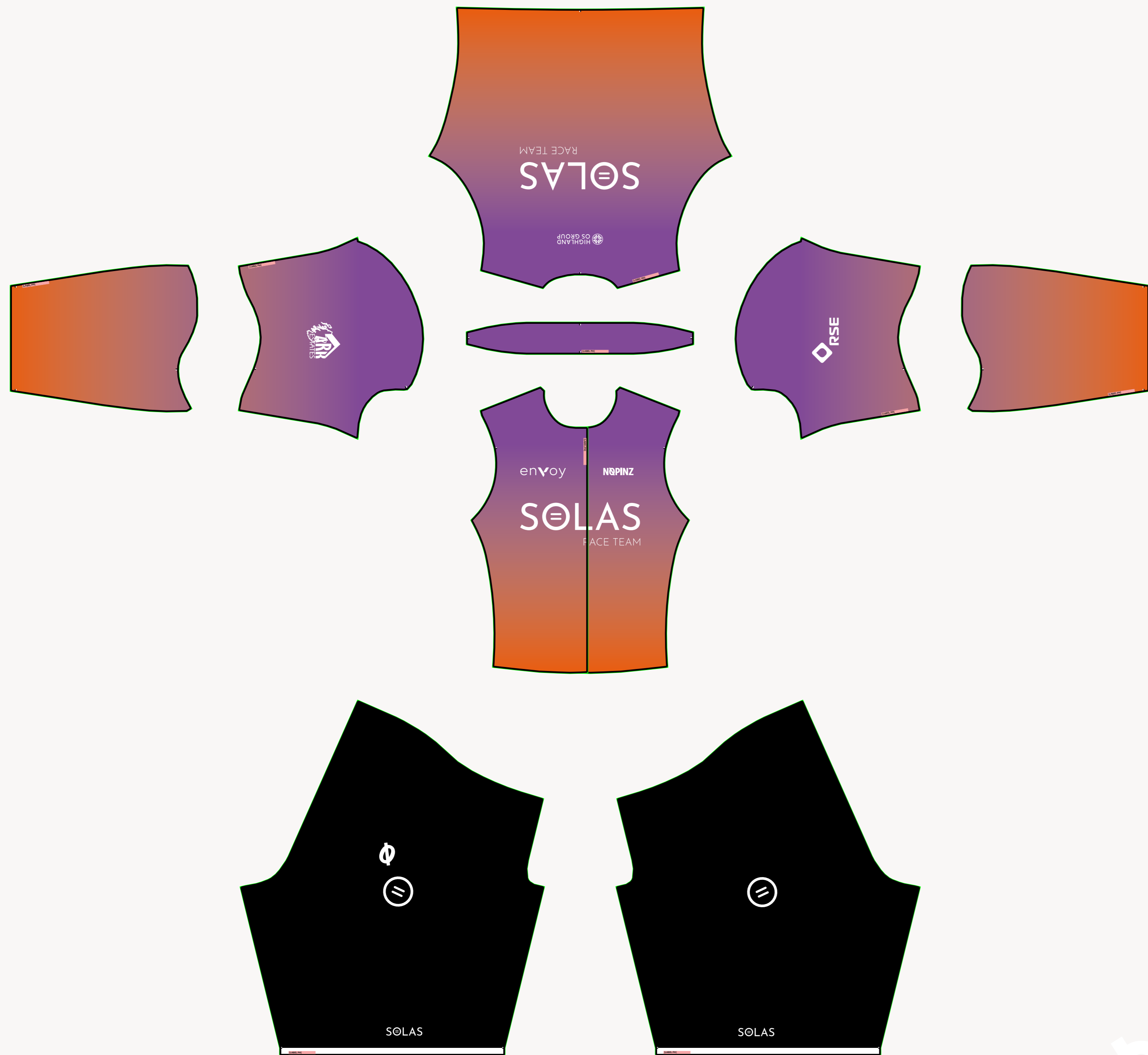
Designer Name : CRAIG



Artwork Name : SOLAS RACE TEAM

Once this design has been signed off, you agree and acknowledge you have read the full NØPINZ T+C on www.nopinzi.com and accept the artwork, colours and payment information stated in this document. If changes need to be made after sign-off there will be a surcharge. Please note, production templates, 2D visuals and 3D renders are the intellectual property of Nopinzi and as such may not be used without the expressed permission of Nopinzi.

Pro-1 Evo Speedsuit



2D Production Template



3D Render



3D Render



3D Render



3D Render

Swatches and Test Prints

N98 Garment Sewing Information

Stitch Colour
Upper - BLACK/WHITE
Lower - BLACK/WHITE

Top Stitch Colour
Chamois - ?

Zip/Zip Guard Colour
BLACK/WHITE

NØPINZ



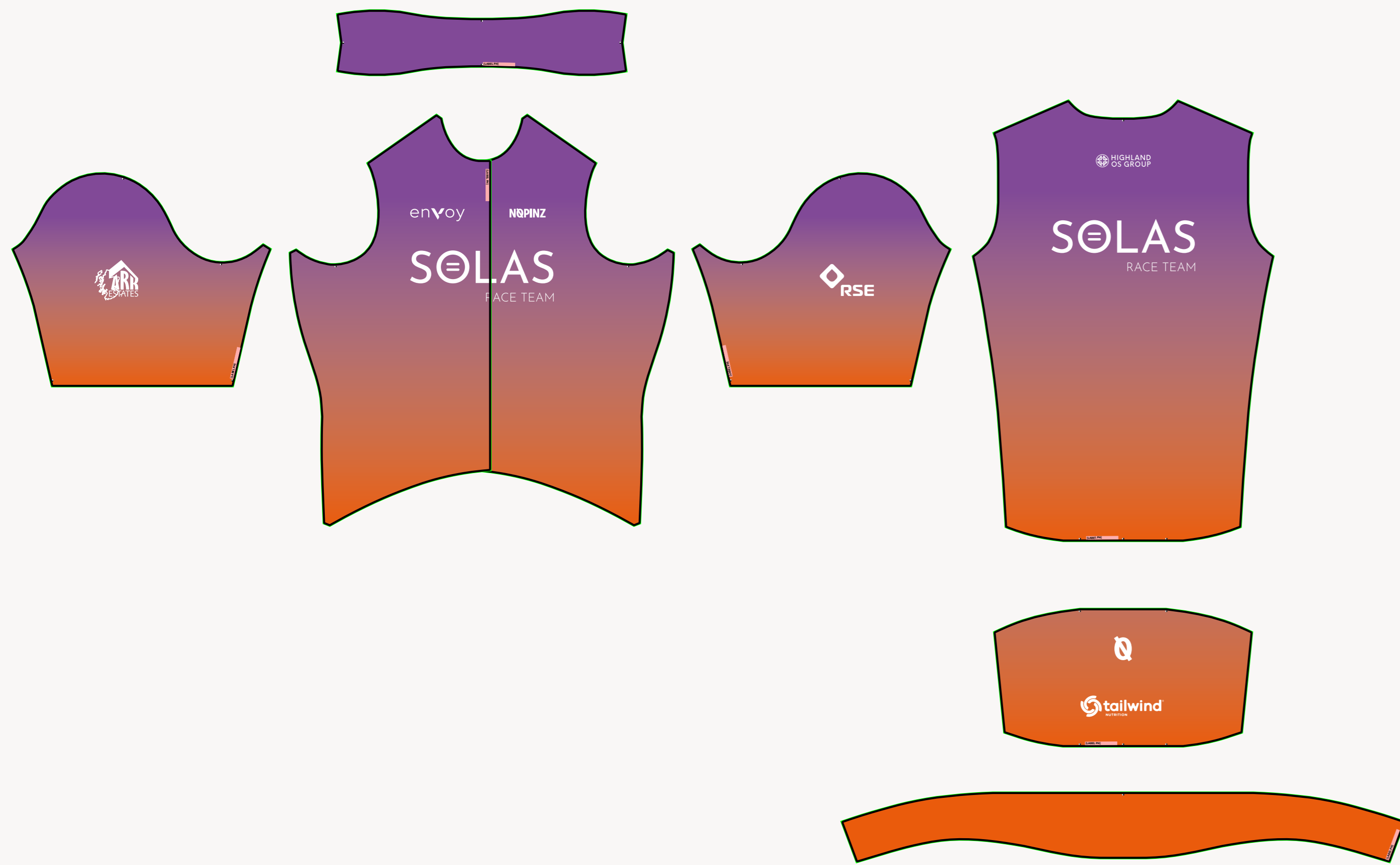
Designer Name : CRAIG



Artwork Name : SOLAS RACE TEAM

Once this design has been signed off, you agree and acknowledge you have read the full NØPINZ T+C on www.nopinzi.com and accept the artwork, colours and payment information stated in this document. If changes need to be made after sign-off there will be a surcharge. Please note, production templates, 2D visuals and 3D renders are the intellectual property of Nopinzi and as such may not be used without the expressed permission of Nopinzi.

Pro-1 Evo Jersey



2D Production Template



3D Render



3D Render



3D Render



3D Render

Swatches and Test Prints

N100 Garment Sewing Information

Stitch Colour
Upper - BLACK/WHITE

Top Stitch Colour
Pocket - ?
Gripper - ?

Zip/Zip Guard Colour
BLACK/WHITE

Pocket Binding Colour
REFLECTIVE SILVER



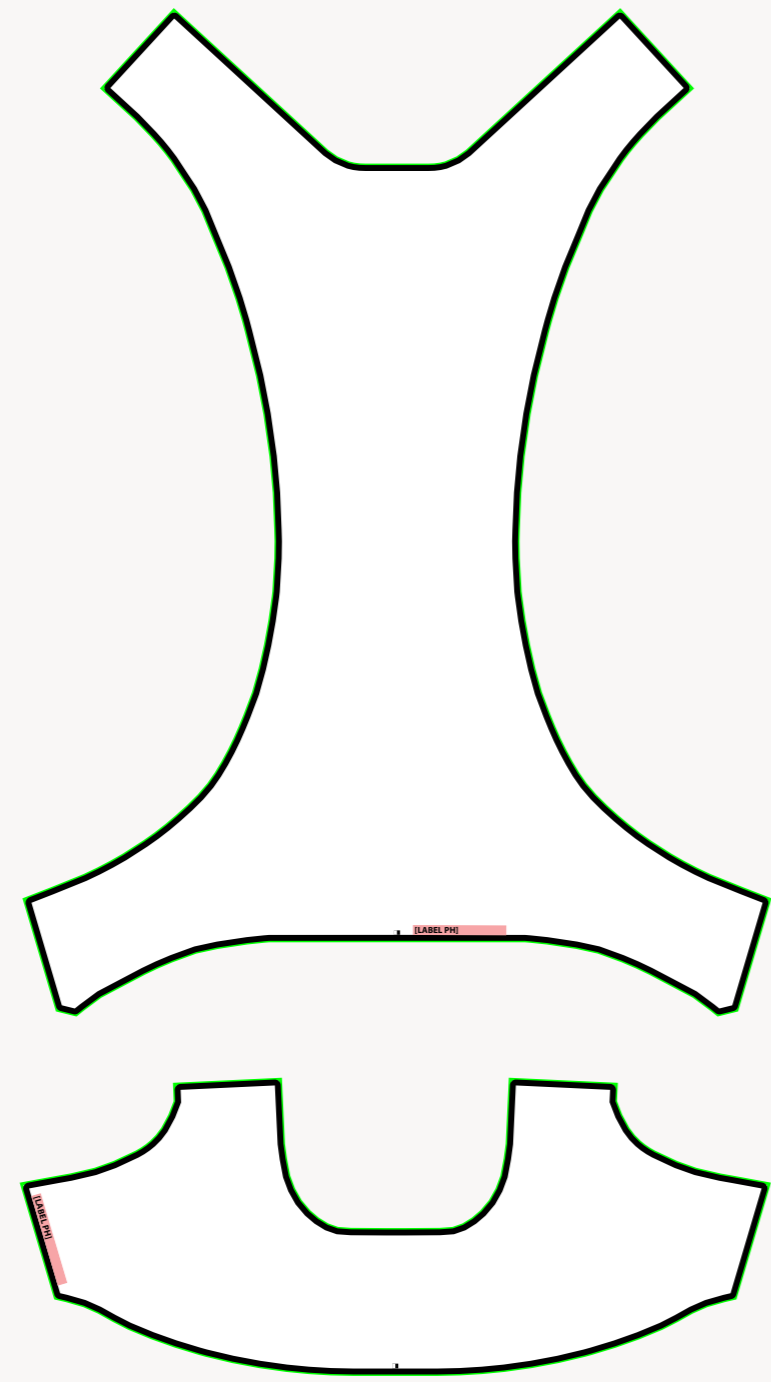
Designer Name : CRAIG



Artwork Name : SOLAS RACE TEAM

Once this design has been signed off, you agree and acknowledge you have read the full NØPINZ T+C on www.nopinzi.com and accept the artwork, colours and payment information stated in this document. If changes need to be made after sign-off there will be a surcharge. Please note, production templates, 2D visuals and 3D renders are the intellectual property of Nopinzi and as such may not be used without the expressed permission of Nopinzi.

Pro-1 Evo Bib Shorts



2D Production Template



3D Render



3D Render



3D Render



3D Render

Swatches and Test Prints

N99 Garment Sewing Information

Stitch Colour
Lower - BLACK/WHITE

Top Stitch Colour
Chamois - ?

Bib Binding Colour
BLACK/WHITE/RED/NAVY/BLUE



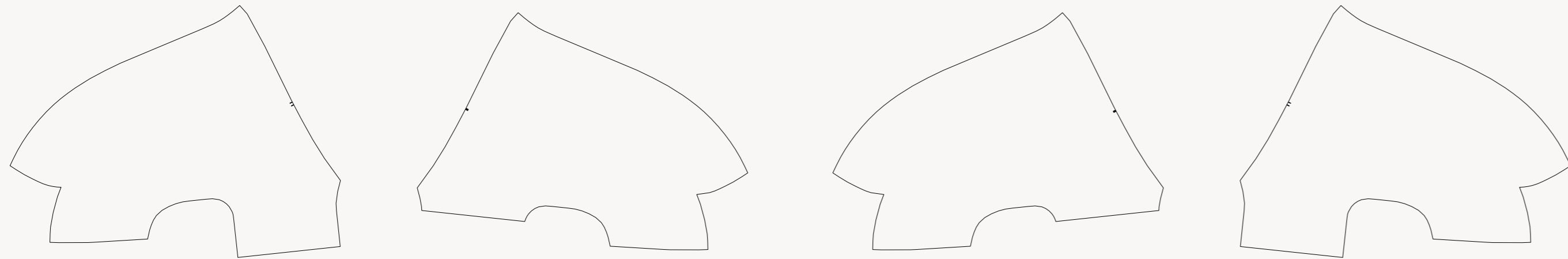
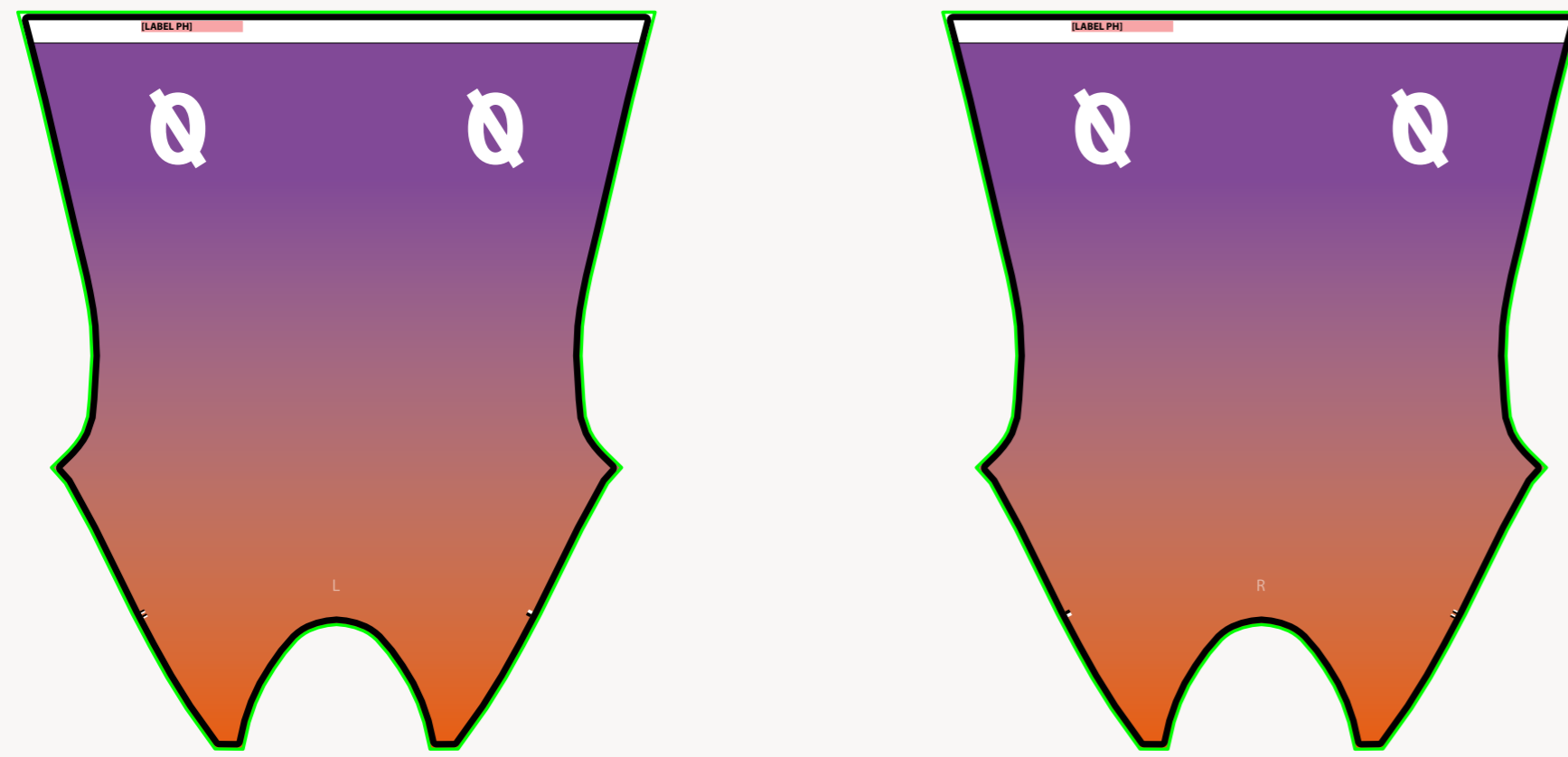
Designer Name : CRAIG



Artwork Name : SOLAS RACE TEAM

Once this design has been signed off, you agree and acknowledge you have read the full NØPINZ T+C on www.nopin.com and accept the artwork, colours and payment information stated in this document. If changes need to be made after sign-off there will be a surcharge. Please note, production templates, 2D visuals and 3D renders are the intellectual property of Nopin and as such may not be used without the expressed permission of Nopin.

Hypersonic Overshoes UCI



2D Production Template



3D Render



3D Render

Swatches and Test Prints



3D Render



3D Render

N84 Garment Sewing Information

Stitch Colour
Socks/Overshoes - BLACK/WHITE

Top Stitch Colour
Socks/Overshoes - ?

NØPINZ

Once this design has been signed off, you agree and acknowledge you have read the full NØPINZ T+C on www.nopinzi.com and accept the artwork, colours and payment information stated in this document. If changes need to be made after sign-off there will be a surcharge. Please note, production templates, 2D visuals and 3D renders are the intellectual property of Nopinzi and as such may not be used without the expressed permission of Nopinzi.

3D Renders

SOLAS RACE TEAM OVERVIEW



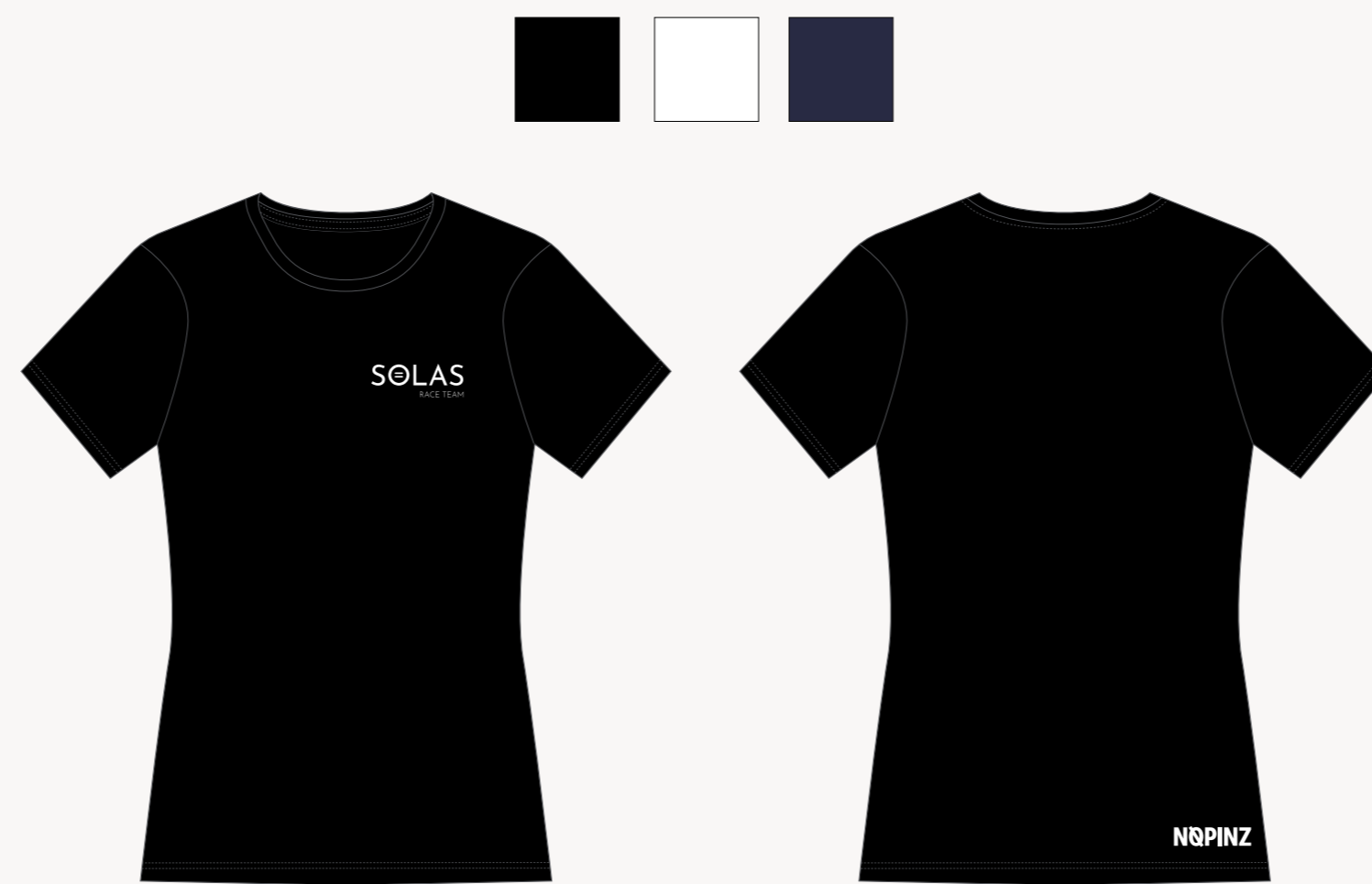
Club Design Overview



Race Day Artwork



PRO-1 EVO RACE CAPE



PERFORMANCE STRETCH T-SHIRT



PRO-1 EVO BLIZZARD JERSEY



RACE DAY CAP



SLIM FIT CUFFED JOGGERS



60 LITRE RACE DAY KIT BAG



Terms and Conditions

Design Notes

These visuals are an approximation of the final artwork.

Agreed artwork will be applied consistently across the full shop range.

Exact positions, scale and sizes cannot be guaranteed.

Artwork may not align perfectly across seams.

Colours may vary when printed on different fabrics and may appear different on screen compared to the final garment.

3D renders are a representation only and may not reflect the final garment exactly.

2D artwork is not an accurate representation of final printed colours.

Artwork and Logos

Artwork placement is approximate; exact positions and scale cannot be guaranteed.

NopinZ cannot ensure artwork aligns perfectly across seams or zips. Our design team will advise on optimal placement to minimise potential issues.

Customers confirm they hold the necessary permissions or copyright for all files and artwork included in the final design.

Additional charges may apply if artwork is not provided in vector format. Our design team will provide an estimated cost in such cases.

NopinZ brand guidelines strictly define logo usage. Logos may only be applied in approved placements, colours, and sizes. These specifications are non-negotiable to maintain brand integrity.

Sewing Information

Stitch Colour

Upper - WHITE
Lower - BLACK
Socks/Overshoes - WHITE

Top Stitch Colour

Pocket - 188
Gripper - 188
Chamois - 000
Socks/Overshoes - 810
Gilet Arm Binding - 810

Zip/Zip Guard Colour

BLACK

Hypersonic Binding Colour

WHITE

Bib Binding Colour

WHITE

Gravel Pocket Binding Colour

WHITE

Tri Pocket Binding

WHITE

Pocket Binding Colour

REFLECTIVE SILVER

Solid shorts panels

BLACK

Singlet

810

Tech Jersey

810

Agreed colours

DEEP BLACK

NP71

NP97

Full Kit Range

The full kit range will maintain a consistent design language across all items.

Minor variations may occur between garments due to differences in construction and fabric type.

Long-sleeve garments (e.g. Roubaix Jerseys) will replicate the design used on the Pro-1 Evo Speedsuit.

Short-sleeve garments (e.g. Endurance Jerseys) will replicate the design used on the Pro-1 Evo Jersey.

Logos and artwork may be adjusted in scale to ensure visual balance across different garment sizes and types.

Socks and overshoes will follow the design used on the UCI Overshoes.

Arm and leg warmers will replicate the designs of the corresponding long-sleeve and shorts artwork.

Race Day items will use the same design as the T-Shirt shown.

Colours

Screen colours do not accurately represent printed colours.

If colour references are not provided, NopinZ cannot guarantee an exact colour match.

Colour swatches and matching services are available on request. We strongly recommend this if you wish to match existing kit precisely.

Colours may appear differently on various fabrics due to differences in density and texture. This is not considered a fault.

Garments may appear lighter when stretched as a result of the manufacturing process. This is not considered a fault.

Textured fabrics may alter the appearance of colours. Pre-dyed panels may look different compared to dye-sublimated sections of a garment. Certain panels are made from pre-dyed materials and are only available in set colours; custom printing is not possible in these areas.

Payment

The design process will only begin once the associated invoice has been paid.

Any unpaid designs remain the property and copyright of NopinZ. If you cancel the order after design work has started, NopinZ reserves the right to retain the design fee.

Changes requested after sign-off will incur a surcharge, which will vary depending on the extent of work required.

Minor adjustments after sign-off may also incur a new design fee. Our design and administration teams will advise you on the process and associated costs.

Sign Off

By approving this design, you confirm that you have read and accepted the full NopinZ Terms & Conditions at www.nopinZ.com, and that you approve the artwork, colours and payment details outlined on this page.

Customer

Name

Fiona Thomson

Email

hub@solascycling.com

Initial

FT

Signature

Fiona Thomson

Date

1/27/2026

Designer

Name

Craig Griffin

Email

Craig@nopinZ.com

Initial

CG

Signature

Craig Griffin

Date

1/27/2026