

REBELLION RACING GLITCH

NØP IN Z

NOPINZ

Designer Name :

Artwork Name :

Once this design has been signed off, you agree and acknowledge you have read the full NOPINZ T+C on www.nopin.com and accept the artwork, colours and payment information stated in this document. If changes need to be made after sign-off there will be a surcharge. Please note, production templates, 2D visuals and 3D renders are the intellectual property of Nopin and as such may not be used without the expressed permission of Nopin.

Pro-1 Evo Road Race Suit



2D Production Template



F_01



F_10



F_03



F_12

Swatches and Test Prints



N97 Garment Sewing Information

Stitch Colour
Upper - BLACK/WHITE
Lower - BLACK/WHITE

Top Stitch Colour
Pocket - ?
Chamois - ?

Zip/Zip Guard Colour
BLACK/WHITE

Pocket Binding Colour
REFLECTIVE SILVER

NOPINZ

Designer Name : Craig

Artwork Name : Rebellion Racing Glitch

Once this design has been signed off, you agree and acknowledge you have read the full NOPINZ T+C on www.nopin.com and accept the artwork, colours and payment information stated in this document. If changes need to be made after sign-off there will be a surcharge. Please note, production templates, 2D visuals and 3D renders are the intellectual property of Nopin and as such may not be used without the expressed permission of Nopin.

Pro-1 Evo Speedsuit



2D Production Template



F_01



F_10



F_03



F_12

Swatches and Test Prints

N98 Garment Sewing Information

Stitch Colour
Upper - BLACK/WHITE
Lower - BLACK/WHITE

Top Stitch Colour
Chamois - ?

Zip/Zip Guard Colour
BLACK/WHITE

Designer Name :

Artwork Name :

Once this design has been signed off, you agree and acknowledge you have read the full NOPINZ T+C on www.nopin.com and accept the artwork, colours and payment information stated in this document. If changes need to be made after sign-off there will be a surcharge. Please note, production templates, 2D visuals and 3D renders are the intellectual property of Nopin and as such may not be used without the expressed permission of Nopin.

Pro-1 Evo Jersey



2D Production Template



F_01



F_10



F_03



F_12

Swatches and Test Prints

N100 Garment Sewing Information

Stitch Colour
Upper - BLACK/WHITE

Top Stitch Colour
Pocket - ?
Gripper - ?

Zip/Zip Guard Colour
BLACK/WHITE

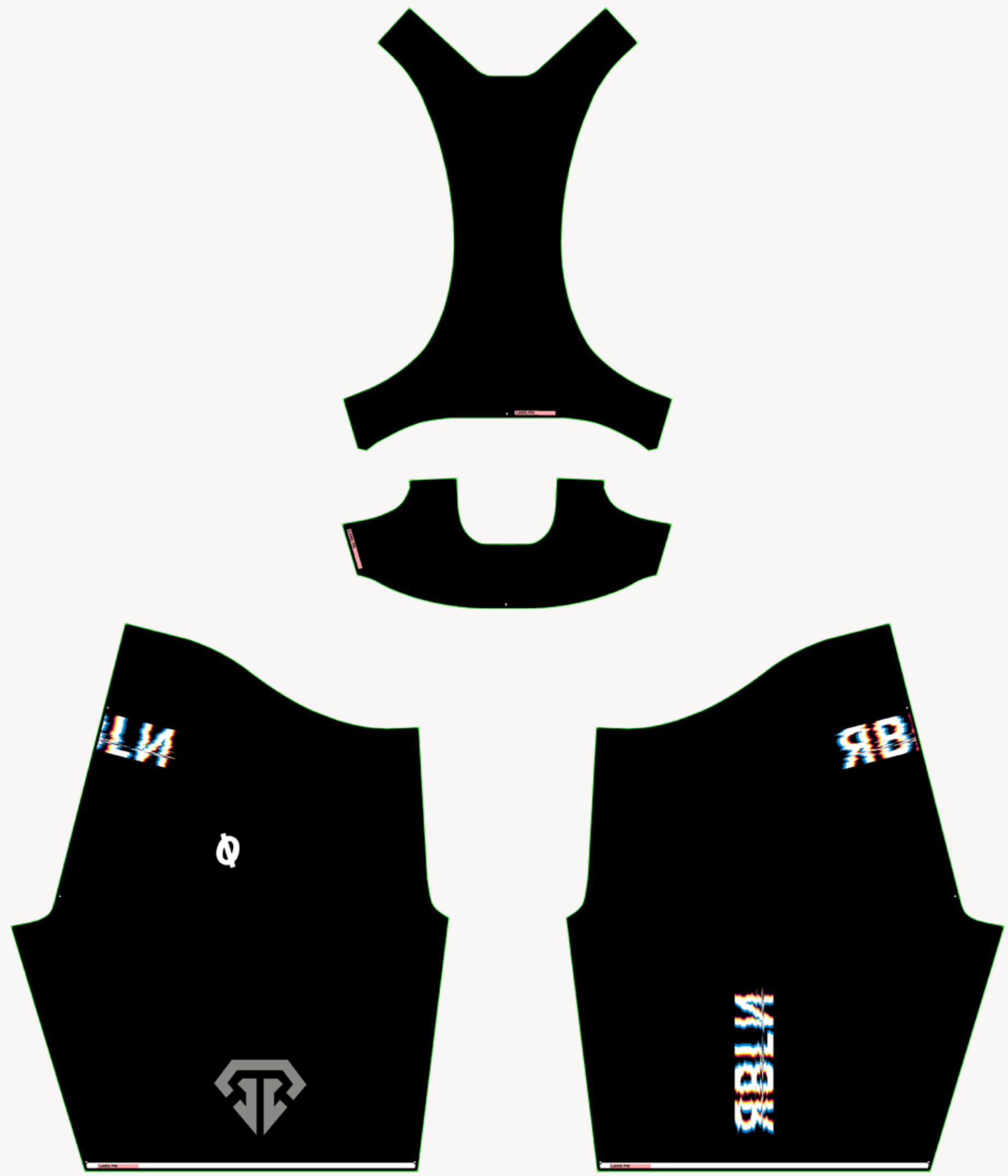
Pocket Binding Colour
REFLECTIVE SILVER

Designer Name :

Artwork Name :

Once this design has been signed off, you agree and acknowledge you have read the full NØPINZ T+C on www.nopin.com and accept the artwork, colours and payment information stated in this document. If changes need to be made after sign-off there will be a surcharge. Please note, production templates, 2D visuals and 3D renders are the intellectual property of Nopin and as such may not be used without the expressed permission of Nopin.

Pro-1 Evo Bib Shorts



2D Production Template



F_01



F_10



F_03



F_12

Swatches and Test Prints

N99 Garment Sewing Information

Stitch Colour
Lower - BLACK/WHITE

Top Stitch Colour
Chamois - ?

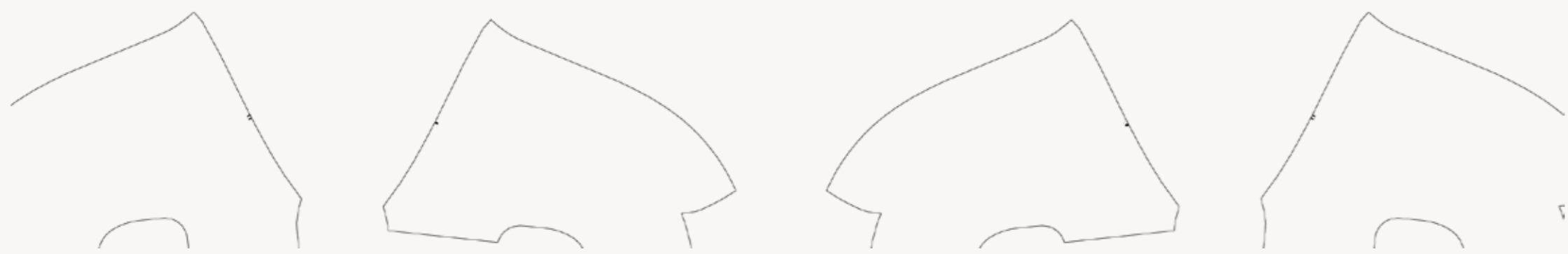
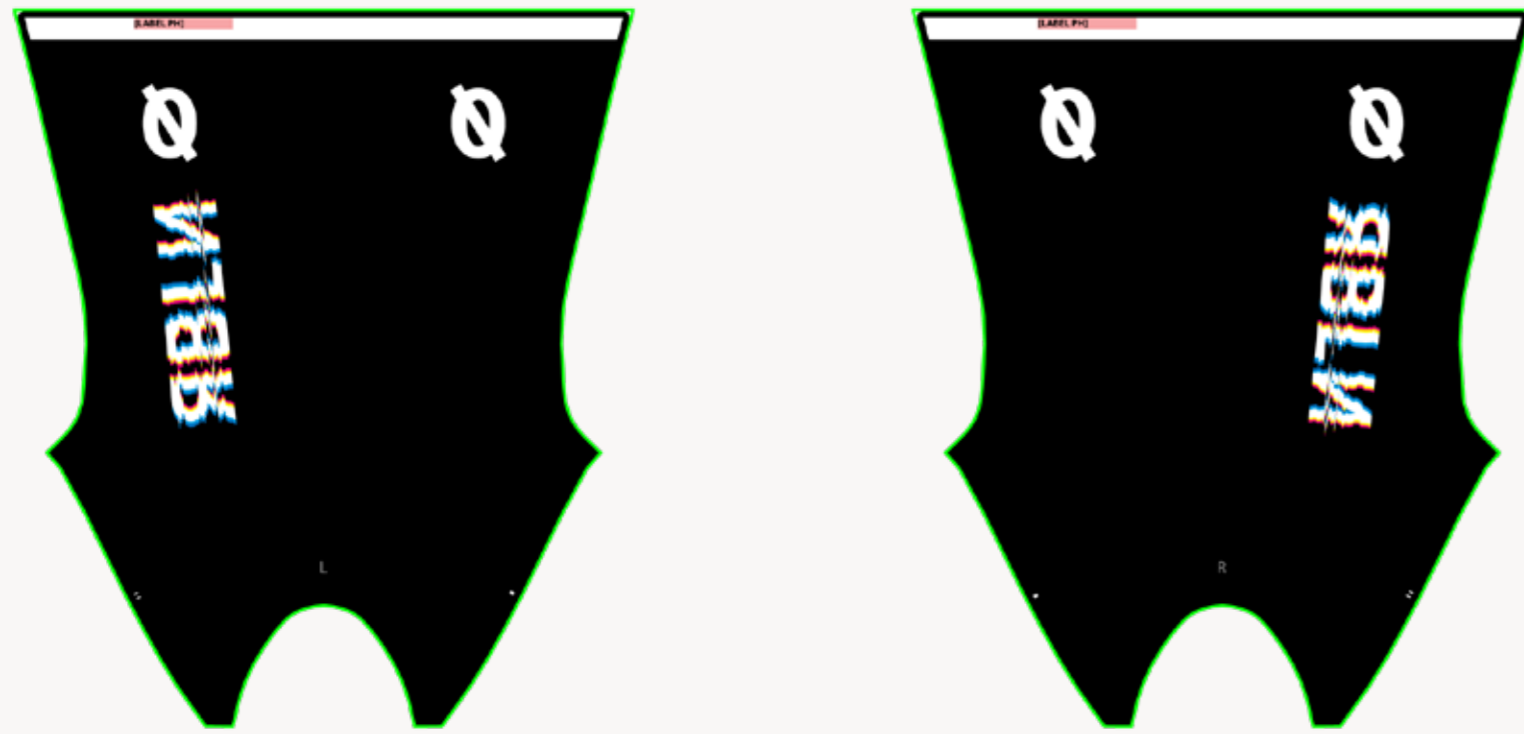
Bib Binding Colour
BLACK/WHITE/RED/NAVY/BLUE

Designer Name :

Artwork Name :

Once this design has been signed off, you agree and acknowledge you have read the full NØPINZ T+C on www.nopinzi.com and accept the artwork, colours and payment information stated in this document. If changes need to be made after sign-off there will be a surcharge. Please note, production templates, 2D visuals and 3D renders are the intellectual property of Nopinzi and as such may not be used without the expressed permission of Nopinzi.

Hypersonic Overshoes UCI



2D Production Template



F_01



F_10



F_03



F_12



Swatches and Test Prints

N84 Garment Sewing Information

Stitch Colour
Socks/Overshoes - BLACK/WHITE

Top Stitch Colour
Socks/Overshoes - ?

NØPINZ

Once this design has been signed off, you agree and acknowledge you have read the full NØPINZ T+C on www.nopin.com and accept the artwork, colours and payment information stated in this document. If changes need to be made after sign-off there will be a surcharge. Please note, production templates, 2D visuals and 3D renders are the intellectual property of Nopin and as such may not be used without the expressed permission of Nopin.

3D Renders

REBELLION RACING GLITCH OVERVIEW - 1145



Club Design Overview



Race Day Artwork



PRO-1 EVO BLIZZARD JERSEY



PERFORMANCE STRETCH T-SHIRT



RACE DAY CAP



PRO-1 EVO RACE CAPE




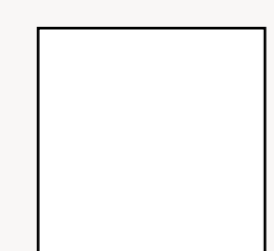


SLIM FIT CUFFED JOGGERS



60 LITRE RACE DAY KIT BAG

Race Day Colour Information

- Pro-1 Evo Blizzard Jersey
BLACK
- Race Day Performance Stretch T-Shirt
BLACK
- Race Day Hooded Sweatshirt
BLACK
- Race Day Slim Fit Cuffed Joggers
BLACK
- Race Day Cap
BLACK
- Race Day Pom Pom Beanie
BLACK
- Race Day Changing Robe
BLACK
- Pro-1 Zip Warm Up Leggings
BLACK

	BLACK
	WHITE
	NAVY BLUE
	GREY

Terms and Conditions

Design Notes

These visuals are an approximation of the final artwork.

Agreed artwork will be applied consistently across the full shop range.

Exact positions, scale and sizes cannot be guaranteed.

Artwork may not align perfectly across seams.

Colours may vary when printed on different fabrics and will appear differently on screen compared to the final garment.

3D renders are a representation only and may not reflect the final garment exactly.

2D artwork is not an accurate representation of final printed colours.

NopinZ cannot guarantee the kit produced will match other manufacturers colours or logo placement.

Small variations may occur between the agreed artwork and the final garments due to the various production processes used.

Artwork and Logos

Artwork placement is approximate; exact positions and scale cannot be guaranteed.

NopinZ cannot ensure artwork aligns perfectly across seams or zips. Our design team will advise on optimal placement to minimise potential problems.

Customers confirm they hold the necessary permissions or copyright for all files and artwork included in the final design.

Additional charges may apply if artwork is not provided in vector format. Our design team will provide an estimated cost in such cases.

NopinZ brand guidelines strictly define logo usage.

NopinZ logos may only be applied in approved placements, colours and sizes. These specifications are non-negotiable to maintain brand integrity.

Sewing Information

Stitch Colour
Upper - BLACK
Lower - BLACK

Top Stitch Colour
Pocket - BLACK (000)
Gripper - BLACK (000)
Chamois - BLACK (000)
Gilet Arm Binding - BLACK (000)
Tech Jersey - BLACK (000)

Zip/Zip Guard Colour
BLACK

Hypersonic Binding Colour
BLACK

Bib Binding Colour
BLACK

Gravel Pocket Binding Colour
BLACK

Tri Pocket Binding
BLACK

Pocket Binding Colour
REFLECTIVE SILVER

Solid shorts panels
BLACK

Seam Tape Colour
BLACK

Velcro Colour
BLACK

Socks Colour
BLACK

Overshoes Colour
BLACK

Agreed colours

NP180

NP120

NP93

NP88

NP87

NP81

Full Kit Range

The full kit range will maintain a consistent design language across all items.

Minor variations may occur between garments due to differences in construction and fabric type.

Long-sleeve garments (e.g. roubaix jerseys and arm warmers) will replicate the design used on the speedsuit.

Short-sleeve garments (e.g. endurance jerseys) will replicate the design used on the jersey.

Logos and artwork may be adjusted in scale to ensure visual balance across different garment sizes and types.

Socks and overshoes will follow the design used on the short overshoes.

Neck/leg warmer design will be at the discretion of the designer.

Race day items will use the club logo in set placements as shown on the race day board above.

Colours

Screen colours do not accurately represent printed colours.

If colour references are not provided, NopinZ cannot guarantee a close colour match.

Colour swatches and matching services are available on request. We strongly recommend this if you wish to receive a close match to kit from another manufacturer.

Colours may appear differently on various fabrics due to differences in density and texture. This is not considered a fault.

Garments may appear lighter when stretched as a result of the manufacturing process. This is not considered a fault.

Textured fabrics may alter the appearance of colours.

Pre-dyed panels may look different compared to dye-sublimated sections of a garment. Certain panels are made from pre-dyed materials and are only available in set colours; custom printing is not possible in these areas.

Payment and surcharges

Any unpaid designs remain the property and copyright of NopinZ. If you cancel the order after design work has started, NopinZ reserves the right to retain the design fee.

Changes requested after sign-off will incur a surcharge, which will vary depending on the extent of work required.

Minor adjustments after sign-off may also incur a new design fee. Our design and administration teams will advise you on the process and associated costs.

There will be an update charge for any club shop that requires amendments in the future. This includes logo changes, colour changes and more in depth design updates.

Sign Off

By approving this design, you confirm that you have read and accepted the full NopinZ Terms & Conditions at www.nopinZ.com, and that you approve the artwork, colours and design notes outlined on this page.

Customer

Name

Steven Palmer

Email

steven@rebellionracing.cc

Initial

SP

Signature



Date

2/19/2026

Designer

Name

Craig Griffin

Email

craig@nopinZ.com

Initial

CG

Signature



Date

2/19/2026