

Harrogate Nova CC

N Q P I N Z

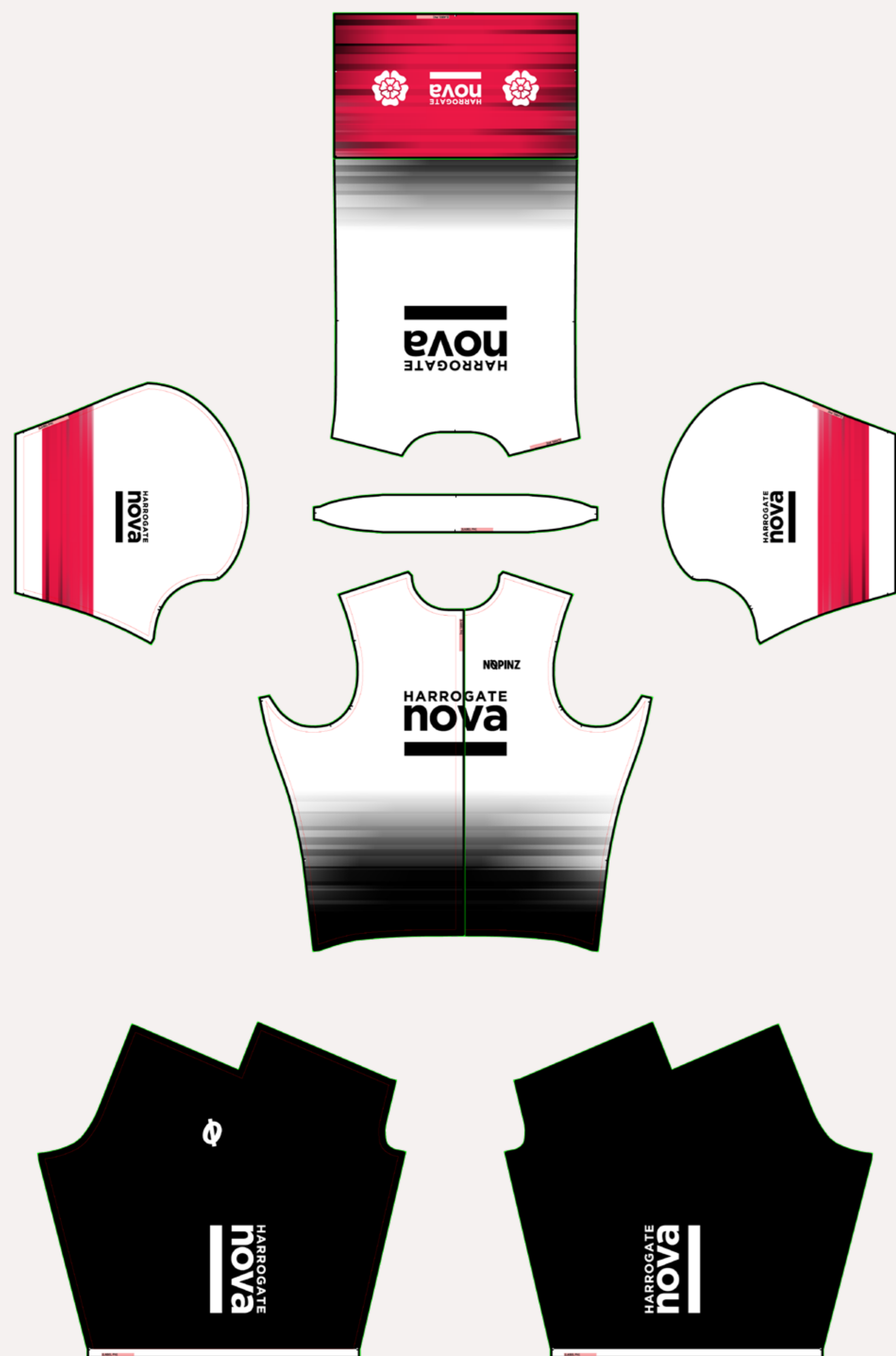
NØPINZ

Designer Name : Matt

Artwork Name : Harrogate Nova CC

Once this design has been signed off, you agree and acknowledge you have read the full NØPINZ T+C on www.nopin.z.com and accept the artwork, colours and payment information stated in this document. If changes need to be made after sign-off there will be a surcharge. Please note, production templates, 2D visuals and 3D renders are the intellectual property of Nopin.z and as such may not be used without the expressed permission of Nopin.z.

Pro-1 Evo Road Race Suit



2D Production Template



F_01



F_10



F_03



F_12

Swatches and Test Prints



Customer has received physical swatches and has agreed to the colours and design. The artwork is not an exact match to the Castelli Print that was provided.

N97 Garment Sewing Information

Stitch Colour
Upper - WHITE
Lower - BLACK

Top Stitch Colour
Pocket - 156
Chamois - 000
Zip/Zip Guard Colour
WHITE

Pocket Binding Colour
REFLECTIVE SILVER

NØPINZ

Designer Name : Matt

Artwork Name : Harrogate Nova CC

Once this design has been signed off, you agree and acknowledge you have read the full NØPINZ T+C on www.nopin.com and accept the artwork, colours and payment information stated in this document. If changes need to be made after sign-off there will be a surcharge. Please note, production templates, 2D visuals and 3D renders are the intellectual property of Nopin and as such may not be used without the expressed permission of Nopin.

Pro-1 Evo Speedsuit



2D Production Template



F_01



F_10



F_03



F_12

Swatches and Test Prints

N98 Garment Sewing Information

Stitch Colour
Upper - WHITE
Lower - BLACK

Top Stitch Colour
Chamois - 000

Zip/Zip Guard Colour
WHITE



Designer Name : Matt



Artwork Name : Harrogate Nova CC

Once this design has been signed off, you agree and acknowledge you have read the full NØPINZ T+C on www.nopinzi.com and accept the artwork, colours and payment information stated in this document. If changes need to be made after sign-off there will be a surcharge. Please note, production templates, 2D visuals and 3D renders are the intellectual property of Nopinzi and as such may not be used without the expressed permission of Nopinzi.

Pro-1 Evo Jersey



2D Production Template



F_01



F_10



F_03



F_12

Swatches and Test Prints

N100 Garment Sewing Information

Stitch Colour
Upper - WHITE

Top Stitch Colour
Pocket - 156
Gripper - 000

Zip/Zip Guard Colour
WHITE

Pocket Binding Colour
REFLECTIVE SILVER



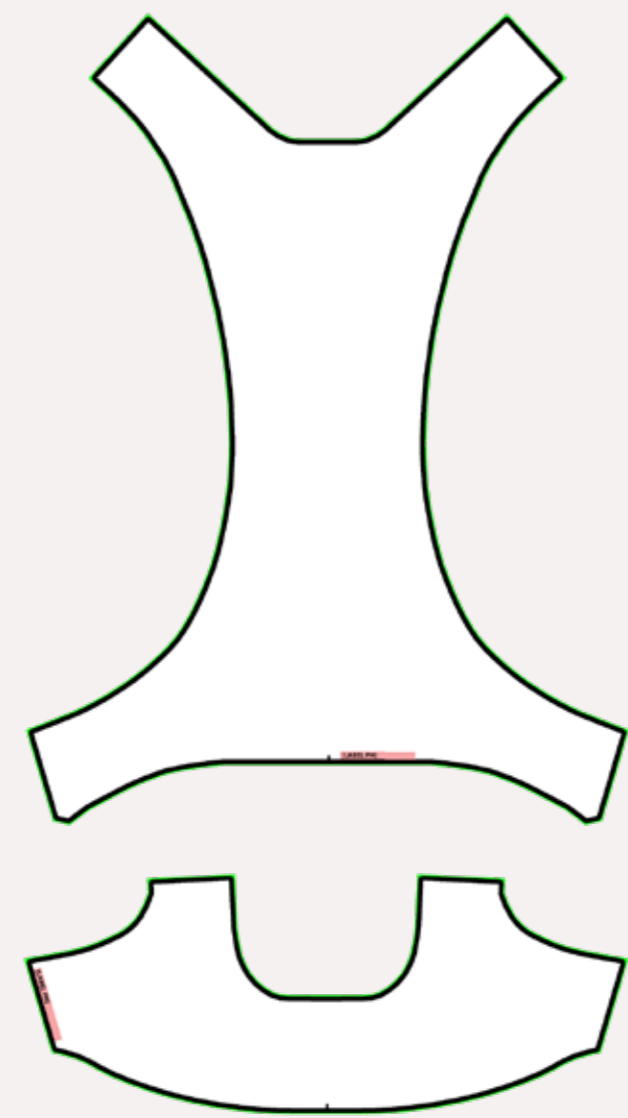
Designer Name : Matt



Artwork Name : Harrogate Nova CC

Once this design has been signed off, you agree and acknowledge you have read the full NØPINZ T+C on www.nopin.com and accept the artwork, colours and payment information stated in this document. If changes need to be made after sign-off there will be a surcharge. Please note, production templates, 2D visuals and 3D renders are the intellectual property of Nopin and as such may not be used without the expressed permission of Nopin.

Pro-1 Evo Bib Shorts



2D Production Template



F_01



F_10



F_03



F_12

Swatches and Test Prints

N99 Garment Sewing Information

Stitch Colour
Lower - BLACK

Top Stitch Colour
Chamois - 000

Bib Binding Colour
WHITE



Designer Name : Matt



Artwork Name : Harrogate Nova CC

Once this design has been signed off, you agree and acknowledge you have read the full NØPINZ T+C on www.nopinzi.com and accept the artwork, colours and payment information stated in this document. If changes need to be made after sign-off there will be a surcharge. Please note, production templates, 2D visuals and 3D renders are the intellectual property of Nopinzi and as such may not be used without the expressed permission of Nopinzi.

Hypersonic Overshoes UCI



2D Production Template



F_01



F_10



F_03



F_12

Swatches and Test Prints

N84 Garment Sewing Information

Stitch Colour
Socks/Overshoes - WHITE

Top Stitch Colour
Socks/Overshoes - WHITE

NØPINZ

Once this design has been signed off, you agree and acknowledge you have read the full NØPINZ T+C on www.nopinzi.com and accept the artwork, colours and payment information stated in this document. If changes need to be made after sign-off there will be a surcharge. Please note, production templates, 2D visuals and 3D renders are the intellectual property of Nopinzi and as such may not be used without the expressed permission of Nopinzi.

3D Renders

HARROGATE NOVA CC OVERVIEW



Club Design Overview





Race Day Artwork



PRO-1 EVO BLIZZARD JERSEY



PERFORMANCE STRETCH T-SHIRT



RACE DAY CAP



PRO-1 EVO RACE CAPE



SLIM FIT CUFFED JOGGERS



60 LITRE RACE DAY KIT BAG

Race Day Colour Information

Pro-1 Evo Blizzard Jersey

BLACK

Race Day Performance Stretch T-Shirt

BLACK

Race Day Hooded Sweatshirt

BLACK

Race Day Slim Fit Cuffed Joggers

BLACK

Race Day Cap

BLACK

Race Day Pom Pom Beanie

BLACK

Race Day Changing Robe

BLACK

Pro-1 Zip Warm Up Leggings

BLACK



BLACK



WHITE



NAVY BLUE



GREY

Terms and Conditions

Design Notes

These visuals are an approximation of the final artwork.

Agreed artwork will be applied consistently across the full shop range.

Exact positions, scale and sizes cannot be guaranteed.

Artwork may not align perfectly across seams.

Colours may vary when printed on different fabrics and will appear differently on screen compared to the final garment.

3D renders are a representation only and may not reflect the final garment exactly.

2D artwork is not an accurate representation of final printed colours.

NopinZ cannot guarantee the kit produced will match other manufacturers colours or logo placement.

Small variations may occur between the agreed artwork and the final garments due to the various production processes used.

Artwork and Logos

Artwork placement is approximate; exact positions and scale cannot be guaranteed.

NopinZ cannot ensure artwork aligns perfectly across seams or zips. Our design team will advise on optimal placement to minimise potential problems.

Customers confirm they hold the necessary permissions or copyright for all files and artwork included in the final design.

Additional charges may apply if artwork is not provided in vector format. Our design team will provide an estimated cost in such cases.

NopinZ brand guidelines strictly define logo usage.

NopinZ logos may only be applied in approved placements, colours and sizes. These specifications are non-negotiable to maintain brand integrity.

Sewing Information

Stitch Colour

Upper - WHITE
Lower - BLACK

Top Stitch Colour

Pocket - RED (156)
Gripper - BLACK (000)
Chamois - BLACK (000)
Gilet Arm Binding - WHITE (800)
Tech Jersey - WHITE (800)

Zip/Zip Guard Colour

WHITE

Hypersonic Binding Colour

BLACK

Bib Binding Colour

WHITE

Gravel Pocket Binding Colour

BLACK

Tri Pocket Binding

BLACK

Pocket Binding Colour

REFLECTIVE SILVER

Solid shorts panels

BLACK

Seam Tape Colour

WHITE

Velcro Colour

WHITE

Socks Colour

WHITE

Overshoes Colour

WHITE

Agreed colours

DEEP BLACK

0,100,70,0

100,100,100,100

NP***

NP***

NP***

Full Kit Range

The full kit range will maintain a consistent design language across all items.

Minor variations may occur between garments due to differences in construction and fabric type.

Long-sleeve garments (e.g. roubaix jerseys and arm warmers) will replicate the design used on the speedsuit.

Short-sleeve garments (e.g. endurance jerseys) will replicate the design used on the jersey.

Logos and artwork may be adjusted in scale to ensure visual balance across different garment sizes and types.

Socks and overshoes will follow the design used on the short overshoes.

Neck/leg warmer design will be at the discretion of the designer.

Race day items will use the club logo in set placements as shown on the race day board above.

Colours

Screen colours do not accurately represent printed colours.

If colour references are not provided, NopinZ cannot guarantee a close colour match.

Colour swatches and matching services are available on request. We strongly recommend this if you wish to receive a close match to kit from another manufacturer.

Colours may appear differently on various fabrics due to differences in density and texture. This is not considered a fault.

Garments may appear lighter when stretched as a result of the manufacturing process. This is not considered a fault.

Textured fabrics may alter the appearance of colours.

Pre-dyed panels may look different compared to dye-sublimated sections of a garment. Certain panels are made from pre-dyed materials and are only available in set colours; custom printing is not possible in these areas.

Payment and surcharges

Any unpaid designs remain the property and copyright of NopinZ. If you cancel the order after design work has started, NopinZ reserves the right to retain the design fee.

Changes requested after sign-off will incur a surcharge, which will vary depending on the extent of work required.

Minor adjustments after sign-off may also incur a new design fee. Our design and administration teams will advise you on the process and associated costs.

There will be an update charge for any club shop that requires amendments in the future. This includes logo changes, colour changes and more in depth design updates.

Sign Off

By approving this design, you confirm that you have read and accepted the full NopinZ Terms & Conditions at www.nopinZ.com, and that you approve the artwork, colours and design notes outlined on this page.

Customer

Name

Rob Senior

Email

rob@senior-pd.co.uk

Initial

RS

Signature

Signed by: Rob Senior

2/16/2026

Designer

Name

Matt Sansom

Email

design@nopinZ.com

Initial

MS

Signature

Signed by: Matt Sansom

2/16/2026