

Designed in Devon

Tailored for Speed

KELTEK RACING NAVY

NØP INZ

Road Race Suit



2D Production Template



F_01



F_10



F_03



F_12

Swatches and Test Prints

Speedsuit



2D Production Template



F_01



F_10



F_03



F_12

Swatches and Test Prints



Designer Name : Oscar



Artwork Name : Keltek Racing Navy

Once this design has been signed off, you agree and acknowledge you have read the full NØPINZ T+C on www.nopin.com and accept the artwork, colours and payment information stated in this document. If changes need to be made after sign-off there will be a surcharge. Please note, production templates, 2D visuals and 3D renders are the intellectual property of Nopin and as such may not be used without the expressed permission of Nopin.

Jersey



2D Production Template



F_01



F_10



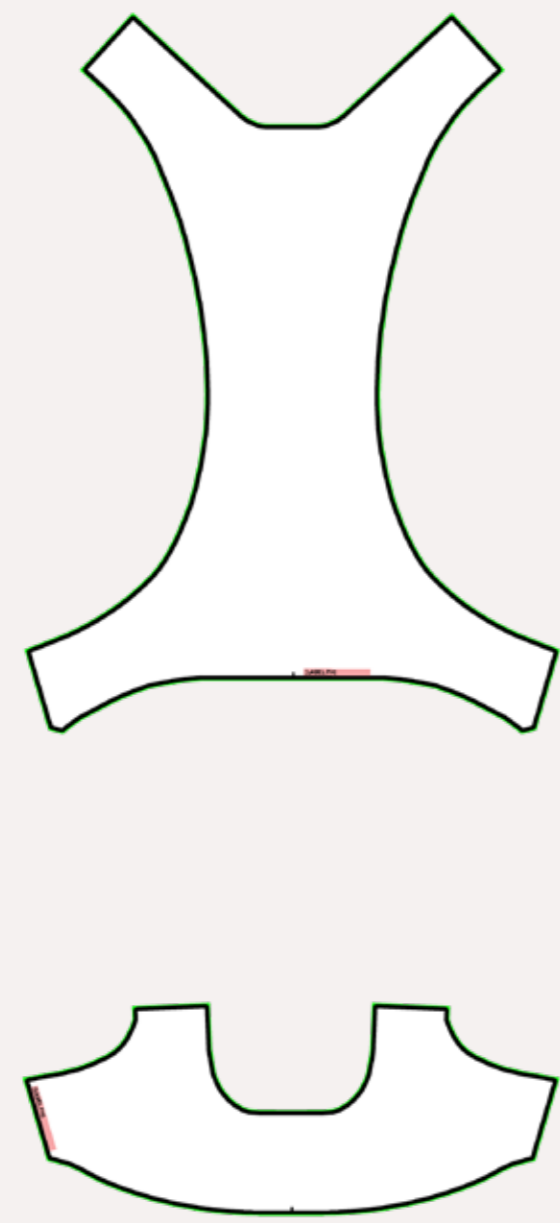
F_03



F_12

Swatches and Test Prints

Bib Shorts



2D Production Template



F_01



F_10



F_03



F_12

Swatches and Test Prints

Overshoes UCI



2D Production Template



F_01



F_10



F_03



F_12



NØPINZ

Once this design has been signed off, you agree and acknowledge you have read the full NØPINZ T+C on www.nopin.com and accept the artwork, colours and payment information stated in this document. If changes need to be made after sign-off there will be a surcharge. Please note, production templates, 2D visuals and 3D renders are the intellectual property of Nopin and as such may not be used without the expressed permission of Nopin.

3D Renders

KELTEK RACING OVERVIEW



Club Design Overview





Race Day Artwork



BLIZZARD JERSEY



RACE CAPE

2D Visuals



Race day club logo in white

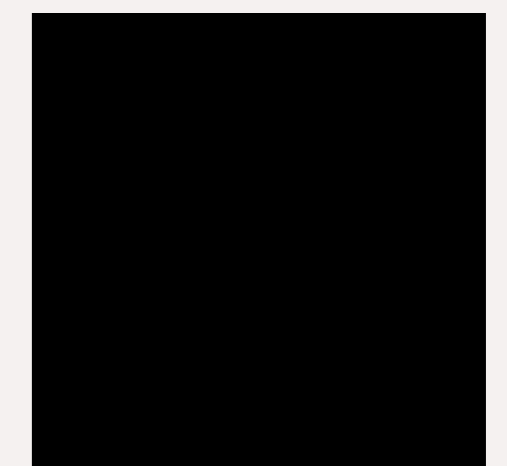
KELTEK
RACING

Race Day Colour Information

Pro-1 Evo Blizzard Jersey
BLACK



NAVY



BLACK

N Terms and Conditions

Design Notes

These visuals are an approximation of the final artwork.

Agreed artwork will be applied consistently across the full shop range.

Exact positions, scale and sizes cannot be guaranteed.

Artwork may not align perfectly across seams.

Colours may vary when printed on different fabrics and will appear differently on screen compared to the final garment.

3D renders are a representation only and may not reflect the final garment exactly.

2D artwork is not an accurate representation of final printed colours.

NopinZ cannot guarantee the kit produced will match other manufacturers colours or logo placement.

Small variations may occur between the agreed artwork and the final garments due to the various production processes used.

Artwork and Logos

Artwork placement is approximate; exact positions and scale cannot be guaranteed.

NopinZ cannot ensure artwork aligns perfectly across seams or zips. Our design team will advise on optimal placement to minimise potential problems.

Customers confirm they hold the necessary permissions or copyright for all files and artwork included in the final design.

Additional charges may apply if artwork is not provided in vector format. Our design team will provide an estimated cost in such cases.

NopinZ brand guidelines strictly define logo usage.

NopinZ logos may only be applied in approved placements, colours and sizes. These specifications are non-negotiable to maintain brand integrity.

Sewing Information

Stitch Colour

Upper - BLACK
Lower - BLACK

Top Stitch Colour

Pocket - DARK BLUE (310)
Gripper - DARK BLUE (310)
Chamois - DARK BLUE (310)
Gilet Arm Binding - DARK BLUE (310)
Tech Jersey - DARK BLUE (310)

Zip/Zip Guard Colour

BLACK

Hypersonic Binding Colour

BLACK

Bib Binding Colour

BLACK

Gravel Pocket Binding Colour

BLACK

Tri Pocket Binding

BLACK

Pocket Binding Colour

REFLECTIVE SILVER

Solid shorts panels

BLACK

Seam Tape Colour

BLACK

Velcro Colour

BLACK

Socks Colour

BLACK

Overshoes Colour

BLACK

Agreed colours

NP169

NP***

NP***

NP***

NP***

NP***

Full Kit Range

The full kit range will maintain a consistent design language across all items.

Minor variations may occur between garments due to differences in construction and fabric type.

Long-sleeve garments (e.g. roubaix jerseys and arm warmers) will replicate the design used on the speedsuit.

Short-sleeve garments (e.g. endurance jerseys) will replicate the design used on the jersey.

Logos and artwork may be adjusted in scale to ensure visual balance across different garment sizes and types.

Socks and overshoes will follow the design used on the short overshoes.

Neck/leg warmer design will be at the discretion of the designer.

Race day items will use the club logo in set placements as shown on the race day board above.

Colours

Screen colours do not accurately represent printed colours.

If colour references are not provided, NopinZ cannot guarantee a close colour match.

Colour swatches and matching services are available on request. We strongly recommend this if you wish to receive a close match to kit from another manufacturer.

Colours may appear differently on various fabrics due to differences in density and texture. This is not considered a fault.

Garments may appear lighter when stretched as a result of the manufacturing process. This is not considered a fault.

Textured fabrics may alter the appearance of colours.

Pre-dyed panels may look different compared to dye-sublimated sections of a garment. Certain panels are made from pre-dyed materials and are only available in set colours; custom printing is not possible in these areas.

Payment and surcharges

Any unpaid designs remain the property and copyright of NopinZ. If you cancel the order after design work has started, NopinZ reserves the right to retain the design fee.

Changes requested after sign-off will incur a surcharge, which will vary depending on the extent of work required.

Minor adjustments after sign-off may also incur a new design fee. Our design and administration teams will advise you on the process and associated costs.

There will be an update charge for any club shop that requires amendments in the future. This includes logo changes, colour changes and more in depth design updates.

Sign Off

By approving this design, you confirm that you have read and accepted the full NopinZ Terms & Conditions at www.nopinZ.com, and that you approve the artwork, colours and design notes outlined on this page.

Customer

Name

Email

Initial

Signature

Date

Designer

Name

Email

Initial

Signature

Date