

Designed in Devon

Tailored for Speed

**USA**

**809**

**Matt**

**NO PINZ**

Road Race Suit



2D Production Template



F\_01



F\_10



F\_03



F\_12

Swatches and Test Prints

Speedsuit



2D Production Template



F\_01



F\_10



F\_03



F\_12

Swatches and Test Prints

## Jersey



2D Production Template



0F\_01



0F\_10



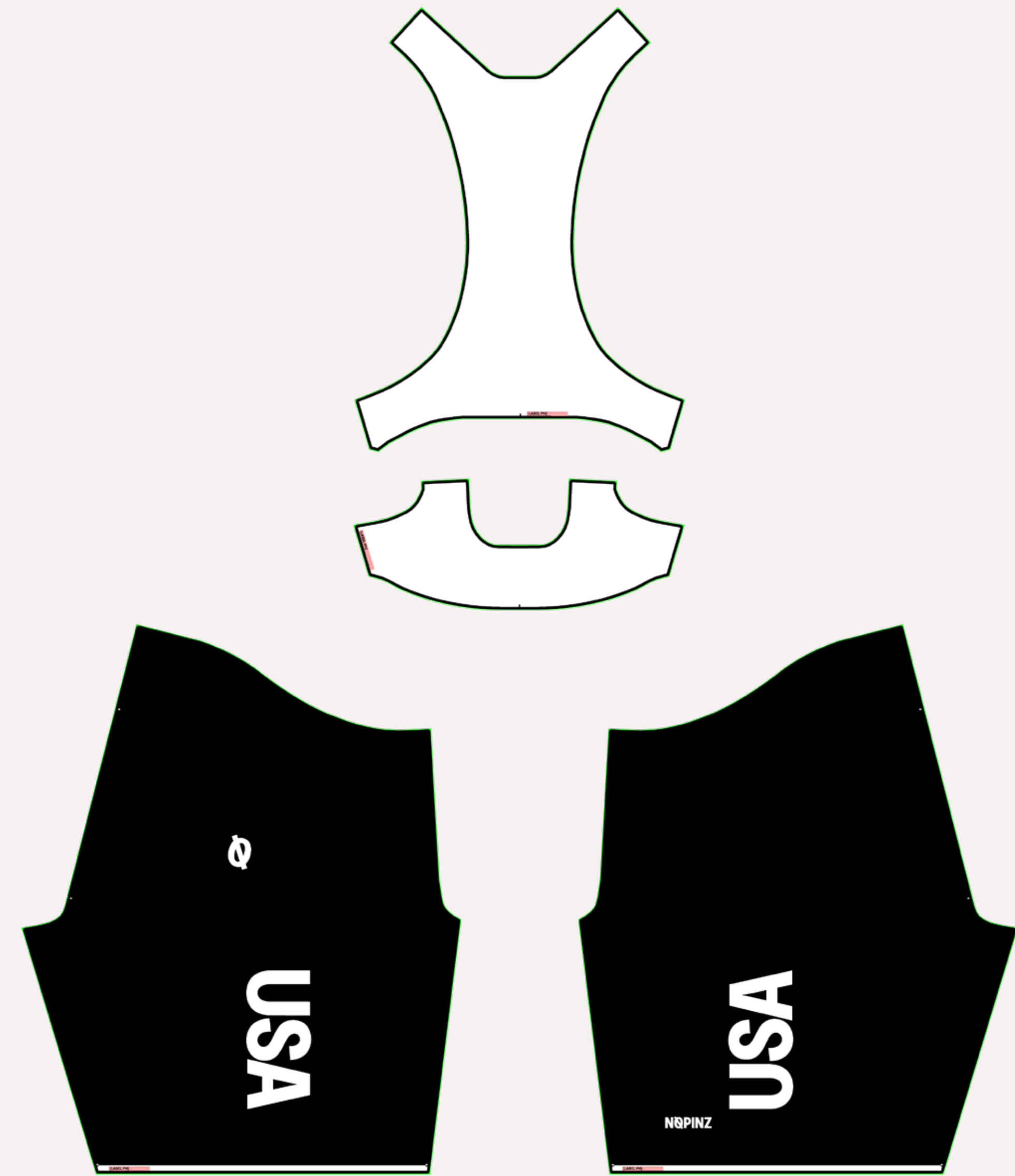
0F\_03



0F\_12

## Swatches and Test Prints

Bib Shorts



2D Production Template



F\_01



F\_10



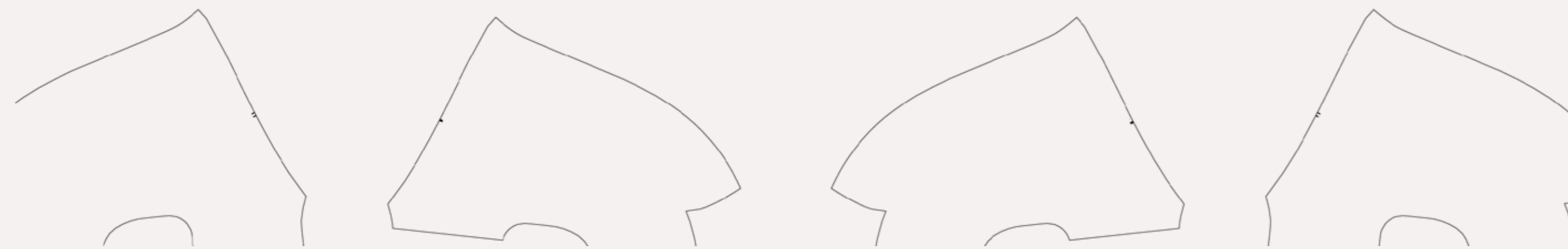
F\_03



F\_12

Swatches and Test Prints

Ø Overshoes



2D Production Template



ØF\_01



ØF\_10



ØF\_03



ØF\_12

Swatches and Test Prints

# NØPINZ

Once this design has been signed off, you agree and acknowledge you have read the full NØPINZ T+C on [www.nopin.com](http://www.nopin.com) and accept the artwork, colours and payment information stated in this document. If changes need to be made after sign-off there will be a surcharge. Please note, production templates, 2D visuals and 3D renders are the intellectual property of Nopin and as such may not be used without the expressed permission of Nopin.

Bib Short template layout

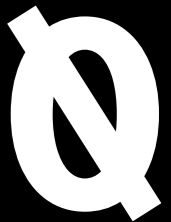
## PRE-DYED SHORTS DESIGN



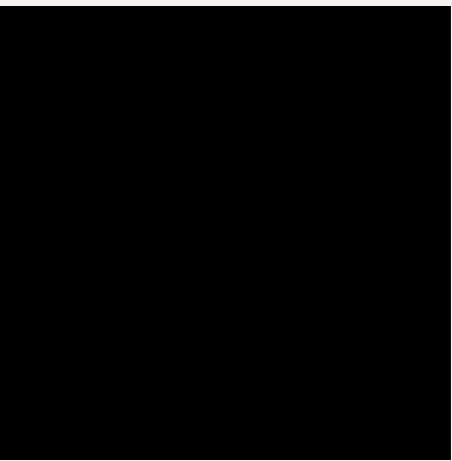
Pre-Dyed Shorts Logos

Logos are made from heat applied white Vinyl  
The size is defined by the logo shape and production process

USA



Pre-Dyed Shorts Colour



BLACK



Race Day Artwork



BLIZZARD JERSEY



RACE CAPE

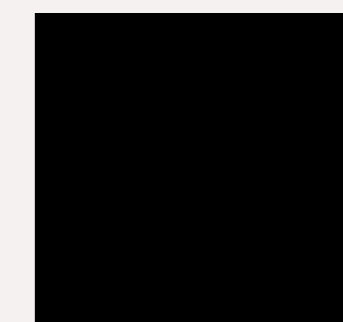


Race day club logo in white

# USA

Race Day Colour Information

Pro-1 Evo Blizzard Jersey  
BLACK



BLACK

## Artwork Overview



# Terms and Conditions

## Design Notes

These visuals are an approximation of the final artwork.

Agreed artwork will be applied consistently across the full shop range.

Exact positions, scale and sizes cannot be guaranteed.

Artwork may not align perfectly across seams.

Colours may vary when printed on different fabrics and will appear differently on screen compared to the final garment.

3D renders are a representation only and may not reflect the final garment exactly.

2D artwork is not an accurate representation of final printed colours.

NopinZ cannot guarantee the kit produced will match other manufacturers colours or logo placement.

Small variations may occur between the agreed artwork and the final garments due to the various production processes used.

## Artwork and Logos

Artwork placement is approximate; exact positions and scale cannot be guaranteed.

NopinZ cannot ensure artwork aligns perfectly across seams or zips. Our design team will advise on optimal placement to minimise potential problems.

Customers confirm they hold the necessary permissions or copyright for all files and artwork included in the final design.

Additional charges may apply if artwork is not provided in vector format. Our design team will provide an estimated cost in such cases.

NopinZ brand guidelines strictly define logo usage.

NopinZ logos may only be applied in approved placements, colours and sizes. These specifications are non-negotiable to maintain brand integrity.

## Sewing Information

### Stitch Colour

Upper - WHITE  
Lower - BLACK

### Top Stitch Colour

Pocket - 800  
Gripper - 800  
Chamois - 000  
Gilet Arm Binding - 000  
Tech Jersey - 000

### Zip/Zip Guard Colour

WHITE

### Hypersonic Binding Colour

WHITE

### Bib Binding Colour

WHITE

### Gravel Pocket Binding Colour

WHITE

### Tri Pocket Binding

WHITE

### Pocket Binding Colour

REFLECTIVE SILVER

### Solid shorts panels

BLACK

### Seam Tape Colour

BLACK

### Velcro Colour

WHITE

### Socks Colour

WHITE

### Overshoes Colour

WHITE

## Agreed colours

Deep Black

NP115

NP168.5

NP\*\*\*

NP\*\*\*

NP\*\*\*

## Full Kit Range

The full kit range will maintain a consistent design language across all items.

Minor variations may occur between garments due to differences in construction and fabric type.

Long-sleeve garments (e.g. roubaix jerseys and arm warmers) will replicate the design used on the speedsuit.

Short-sleeve garments (e.g. endurance jerseys) will replicate the design used on the jersey.

Logos and artwork may be adjusted in scale to ensure visual balance across different garment sizes and types.

Socks and overshoes will follow the design used on the short overshoes.

Neck/leg warmer design will be at the discretion of the designer.

Race day items will use the club logo in set placements as shown on the race day board above.

## Colours

Screen colours do not accurately represent printed colours.

If colour references are not provided, NopinZ cannot guarantee a close colour match.

Colour swatches and matching services are available on request. We strongly recommend this if you wish to receive a close match to kit from another manufacturer.

Colours may appear differently on various fabrics due to differences in density and texture. This is not considered a fault.

Garments may appear lighter when stretched as a result of the manufacturing process. This is not considered a fault.

Textured fabrics may alter the appearance of colours.

Pre-dyed panels may look different compared to dye-sublimated sections of a garment. Certain panels are made from pre-dyed materials and are only available in set colours; custom printing is not possible in these areas.

## Payment and surcharges

Any unpaid designs remain the property and copyright of NopinZ. If you cancel the order after design work has started, NopinZ reserves the right to retain the design fee.

Changes requested after sign-off will incur a surcharge, which will vary depending on the extent of work required.

Minor adjustments after sign-off may also incur a new design fee. Our design and administration teams will advise you on the process and associated costs.

There will be an update charge for any club shop that requires amendments in the future. This includes logo changes, colour changes and more in depth design updates.

## Sign Off

By approving this design, you confirm that you have read and accepted the full NopinZ Terms & Conditions at [www.nopinZ.com](http://www.nopinZ.com), and that you approve the artwork, colours and design notes outlined on this page.

### Customer

Name

Email

Initial

Signature

Date

### Designer

Name

Email

Initial

Signature

Date